

Year 12 – Budgeting

HeppSY Online Offer 2020

Accommodation/Halls of Residence options:

Option 1 - £91 per week = Total of £1274 for 14 weeks

- Self-catering
- Shared bathroom but room contains sink
- A short walk from the university
- Shared lounge and kitchen
- Social areas (common room, pool tables and courtyard)
- All bills included



Option 2 - £109 per week = Total of £1526 for 14 weeks

- Self-catering
- En suite
- A short bus journey from the university
- Shared lounge and kitchen
- Social areas (common room, pool tables and courtyard)
- All bills included



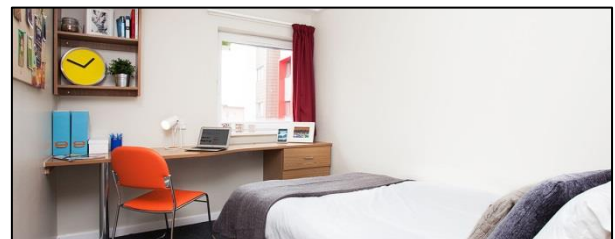
Option 3 - £127 per week = Total of £1778 for 14 weeks

- Self-catering
- En suite
- Close to university (10-15 minute walk)
- Shared lounge and kitchen
- Social areas (common room, pool tables and courtyard)
- All bills included



Option 4 - £145 per week = Total of £2030 for 14 weeks

- Catered
- En suite
- Close to university
- Shared lounge and kitchen
- Social areas (common room, pool tables and courtyard)
- All bills included




Option 5 - £204 per week = Total of £2856 for 14 weeks

- Self-catering
- Self-contained flat (bathroom and kitchen) - no sharing
- Close to university
- All bills included
- Double bed



Other options:

Weekly item	Option 1	Option 2	Option 3	Option 4
Food	 <p>Mainly takeaways and eating out</p> <p>£55 a week (£770 for 14 weeks)</p>	 <p>Shopping only as and when hungry at the closest shop</p> <p>£40 a week (£560 for 14 weeks)</p>	 <p>Weekly branded shop</p> <p>£30 a week (£420 for 14 weeks)</p>	 <p>Weekly unbranded shop</p> <p>£20 a week (£280 for 14 weeks)</p>
Movie/TV	 <p>+</p>  <p>£5 a week (£70 for 14 weeks)</p>	 <p>£3 a week (£42 for 14 weeks)</p>	 <p>£2 a week (£28 for 14 weeks)</p>	<p>NONE</p>
Music	 <p>£1.25 a week (for students) (£17 for 14 weeks)</p>	<p>NONE</p>		
Phone	 <p>Newest phone and unlimited data/mins/texts</p> <p>£12 a week (£168 for 14 weeks)</p>	 <p>Older phone and unlimited data/mins/text</p> <p>£8 a week (£112 for 14 weeks)</p>	 <p>Older phone and limited data/mins/text</p> <p>£5 a week (£70 for 14 weeks)</p>	 <p>Cheapest sim only contract</p> <p>£2.50 a week (£35 for 14 weeks)</p>

<p>Social budget</p>	 <p>£75 a week (£1050 for 14 weeks)</p>	 <p>£50 a week (£700 for 14 weeks)</p>	 <p>£25 a week (£450 for 14 weeks)</p>	 <p>£10 a week (£140 for 14 weeks)</p>
<p>Travel</p>	 <p>Taxis £25 a week (£350 for 14 weeks)</p>	 <p>Driving own car and parking permit £20 a week (£280 for 14 weeks)</p>	 <p>Public transport £8 a week (£112 for 14 weeks)</p>	 <p>Walking/Cycling £0</p>
<p>Sport</p>	 <p>Ultimate sport membership (Gym, University sport and city wide facilities) £10 a week (£140 for 14 weeks)</p>	 <p>University sport membership £5 a week (£70 for 14 weeks)</p>	 <p>University gym membership £3 a week (£42 for 14 weeks)</p>	 <p>Free exercise (at home or running etc...) £0</p>

	Option 1	Option 2	Option3	Option 4
One off item Household items	<p>Brand new branded set</p> <p>One off £80</p>	<p>Brand new basic set</p> <p>One off £50</p>	<p>Second hand set</p> <p>One off £30</p>	<p>Gather items from family home and buy the odd essential</p> <p>One off £15</p>
Course supplies	<p>New laptop and stationary resources</p> <p>One off £500</p>	<p>Used laptop and stationary resources</p> <p>One off £250</p>	<p>Basic stationary and use university facilities</p> <p>One off £10</p>	
University books	<p>New university books</p> <p>One off £60</p>	<p>Used university books</p> <p>One off £35</p>	<p>Use library books</p> <p>£0</p>	
Birthdays and holidays	<p>Gifts and Dinner</p> <p>One off £100</p>	<p>Gifts</p> <p>One off £50</p>	<p>Handmade gifts</p> <p>One off £10</p>	<p>Wish them a happy birthday over the phone</p> <p>£0</p>

Item	Option 1	Option 2	Option3	Option 4
Part time job	<p>16 hours</p> <p>£98 a week</p> <p>(£1377 for 14 weeks)</p>	<p>8 hours</p> <p>£49 a week</p> <p>(£686 for 14 weeks)</p>	<p>4 hours</p> <p>£24.60 a week</p> <p>(£344 for 14 weeks)</p>	<p>NONE</p>

