



Meadowhead School and Sixth Form

Year 11 Welcome Evening
Thursday 18th September 2025



Thank you for being here this evening.

- To give you as parents/carers confidence to support your child through the challenges of Year 11 – there is a lot going on.
- To pass on key information relating to what is happening between now and the final GCSE exams.
- To emphasise how important being in school is each day.
- To reassure you that stress is normal for students.
- To ask for your support in ensuring that the basics such as uniform are right every day.
- To ask for your support in encouraging Year 11 students to attend after school sessions.

Handout for families – Important dates, Mock examination TT and after School sessions

Meadowhead School
and Sixth Form



Year 11 Welcome Evening Handout Thursday 18th September 2025



Supported Study QR



Contents:

- Important dates for the year ahead
- Mock Examination timetable
- After school revision sessions programme

Year 11 Important dates 2025 – 2026

Date(s)	Event
18 th September 2025	Welcome to Year 11 (parents meeting)
23 rd September 2025	Post 16 Parent/Carer webinar – next steps (4.00-4.45 online)
29 th September – 2 nd October 2025	Woodwork NEA
6 th October – 8 th October 2025	Food NEA
27 th October – 2 nd November 2025	Half Term
6 th November 2025	Sixth Form open event for Y11s (5.00-7.00)
10 th November – 13 th November 2025	Food NEA
13 th November 2025	Year 11 Apprenticeships Evening (5 – 7pm)
24 th November – 5 th December 2025	Year 11 Mock Exams
1 st December 2025	Post 16 – applications open until 31 st January
8 th December – 12 th December 2025	Electrical NEA
8 th December – 19 th December 2025	Art Exams
20 th December – 5 th January 2026	Christmas break (staff training day on Monday 5 th January)
19 th January – 23 rd January 2026	Food NEA
29 th January 2026	Y11 Parents' Evening
31 st January 2026	Post 16 – deadline for applications (city-wide)
2 nd February – 6 th February 2026	Plumbing NEA
16 th February – 22 nd February 2026	Half Term (revision sessions may be offered)
25 th February – 6 th March 2026	Year 11 Mock Exams
27 th February 2026	Post 16 – sixth form offers made (city-wide)
30 th March – 12 th April 2026	Easter Break (revision sessions may be offered)
13 th April – 24 th April 2026	Geography pre-release materials in lesson time
20 th April – 1 st May 2026	Art Exams
27 th April – 8 th May 2026	Language Oral exams
4 th May 2026	Bank Holiday
11 th May – 23 rd June 2026	GCSE Exams
25 th May – 31 st May 2026	Half Term (revision sessions may be offered)
23 rd June 2026	Record of Achievement Event (afternoon)
24 th June 2026	All students must be available for this national contingency day
26 th June 2026	Year 11 Prom
Thursday 20 th August 2026	GCSE Results Day

Monday	Tuesday	Wednesday	Thursday	Friday
Art Open Studio (D12)	Art Open Studio (D12)	Art Open Studio (D12)	Textiles Open Studio (D09)	School Production
Computer Science (M10)	Library Independent Study/ Quiet Reading	Library Independent Study/ Quiet Reading	Careers Drop-in (L10)	Drama Intervention
English Revision (E03)	Maths Homework Support (Mezz)	Sports Revision (L09)	GCSE DT/ Construction (D06)	Fitness Suite
Extended Maths (invite only) (M09)	Dance (Activity Room 2)		Food and Nutrition (D08)	Food and Nutrition (D08)
Library Independent Study/ Quiet Reading	Drama Intervention Performing Arts		Geography Revision (H11)	Library Independent Study/ Quiet Reading
Music Intervention Performing Arts	Science Revision (F) (S04) (H/T) (S12)		Library Independent Study/ Quiet Reading	Music Intervention Performing Arts
	GCSE DT/Construction (D06)		Maths Revision (Y11) (F) M13 (H) M04	
	EAL Revision (L14)		Religious Studies Intervention (L08)	
	English Revision (E11)			
	Geography Revision (H03)			
	History Revision (H07)			

	Morning Exam	Afternoon Exam
Monday 24 th November	English language Paper 2	Biology
Tuesday 25 th November	Geography paper 1	History paper 1
Wednesday 26 th November	Mathematics paper 1	Food and GCSE Music
Thursday 27 th November	Chemistry	Languages Paper 1 and BTEC Construction
Friday 28 th November	English literature paper 1	Computer Science/ Religious Studies / Drama
Monday 1 st December	History paper 2	Mathematics paper 2
Tuesday 2 nd December	Design Technology	Geography paper 2
Wednesday 3 rd December	Staff Training Day	Staff Training Day
Thursday 4 th December	Physics	ICT (Mezz) and Languages paper 2
Friday 5 th December	Mathematics paper 3	Sports Studies

Year 11–Assessment is on-going, not all of it is about the Summer

- Many vocational subjects have assessments that count towards some or all of the final grade, for example we have food NEAs, drama and dance assessments and a 10 hour art assessment that takes place this term.
- Subjects such as English may only cover a particular poem in one lesson, if you are absent, you may miss the content.
- We provide two sets of mock examinations in the year, 24th November – 5th December 2025 and 23rd February – 6th March 2026 both aimed at ensuring students are familiar and comfortable with the arrangements for their Summer examinations.
- They measure a student's understanding of the work to that point and are used to encourage good revision practises, such as attending revision sessions and planning a revision timetable.

Year 11 Summer Examinations 2026

- ‘Traditional’ written papers begin on the 11th May 2026 and run through until 24th June 2026 (this is a contingency day and so all students must be available up until this date)
- During this time, a typical student will sit 20+ examination papers in around 25 school days.
- We do not operate a policy of study leave (and haven’t in the 17 years I have worked here)
- Most students have at least one examination paper most days.
- If they are fortunate enough to have some days without papers, we expect them in school and will provide teacher expertise, booster sessions and continue good routines ahead of their remaining papers – no dental/ doctors appointments please.

Year 11 Summer Examinations 2026

- If students miss a paper in the Summer window, they cannot take it the day after (we have had students think that this is the case in the past)
- If medical evidence cannot be provided as to why a student is absent from an examination they have been entered for, the cost of that entry will be passed on to the family. This is typically around £50 per subject.
- Missed exams = No attendance to Prom.

Support outside of the teaching day

- In Year 11, we **expect all students** to extend their school day beyond the 2:45pm finish at least twice a week.
- English teachers will be providing a **compulsory** period 6 lesson for all Y11 students, aimed at improving the quality of extended writing tasks. This will benefit all students, both with their Year 11 studies, and with potential post 16 courses. It is as a result of feedback from students and their teachers.
- **We have a member of the Maths team outside to share information relating to revision and expectations** if you'd like to discuss Maths further.

Careers – post-16 choices



INFORMATION

- Sep-Dec 1-to-1 careers meeting
- **23 Sep Y11 Parent/carer webinar 4.00pm - 4.45pm**
- 06 Nov Meadowhead open event 5.00pm - 7.00pm
- Oct-Nov Other college / sixth form open events

SUPPORT

- careers@meadowhead.sheffield.sch.uk
- After-school L10 Thurs 2.45pm
- Career office Break/lunch etc

DATES

- 01 Dec Applications open
- **31 Jan Deadline to apply**
- 27 Feb SF offers made

Future Aspirations – Mr Collins

- Sixth Form Assembly from Mr Gardiner – Thursday 2nd October.
- Meadowhead Sixth Form Open Event: Thursday 6th November, 5 – 7pm (booking information to follow via email).
- Applying to Apprenticeships, Colleges & Training providers: Thursday, 13th November 2025
- January: Sixth Form Interviews (informal discussions with a member of the Sixth Form Team about subjects, entry requirements and attendance)
- Wednesday 1st and Thursday 2nd July: Sixth Form Transition days



Year 11 Aims

- **Attendance 95%**

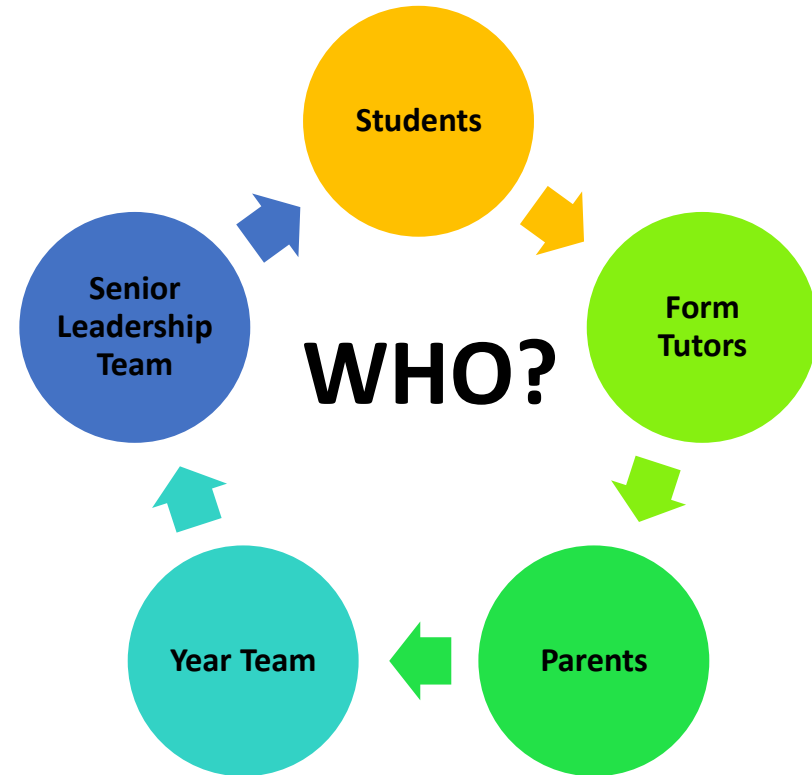
(190 School Days, this means there are only 9.5 days absence across the whole year).

- **Grades - future aspirations**

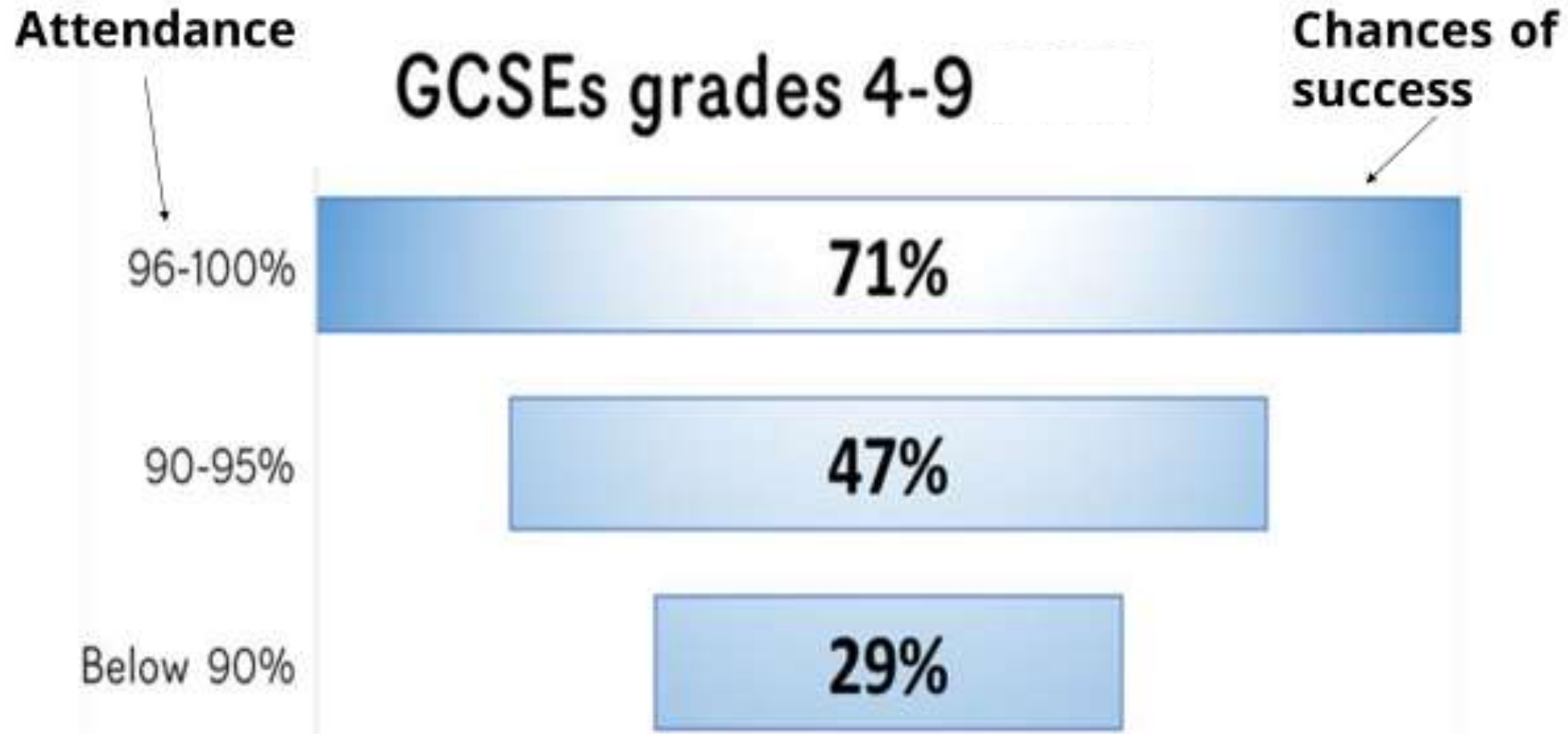
College and Sixth form etc.

- **Skills**

Ready for employment
(C.V. and Applications etc.)



Attendance- Always a priority



W	Week Beginning	Y11
1	01.09.25	
2	08.09.25	
3	15.09.25	Y11 Parents' Meeting (6pm)
4	22.09.25	
5	29.09.25	
6	06.10.25	RP1 Input Deadline
7	13.10.25	RP1 Checking
8	20.10.25	RP1 Publication
OCTOBER HALF TERM		
9	03.11.25	
10	10.11.25	
11	17.11.25	Y11 BTEC Assessment Wk
12	24.11.25	Y11 Mocks
13	01.12.25	Y11 Mocks
14	08.12.25	Mod / Mark /Art Mock
15	15.12.25	Mod / Mark /Art Mock
CHRISTMAS BREAK		
16	05.01.26	RP2 Input Deadline
17	12.01.26	RP2 Checking
18	19.01.26	RP2 Publication
19	26.01.26	Y11 Parents' Evening
20	02.02.26	
21	09.02.26	

F	FEBRUARY HALF TERM	
22	23.02.26	Y11 Mocks (W)
23	02.03.26	Y11 Mocks
24	09.03.26	Moderation / Marking
25	16.03.26	RP3 Input Deadline
26	23.03.26	RP3 Publication
EASTER HOLIDAY		
27	13.04.26	
28	20.04.26	Y11 Art Exams
29	27.04.26	Y11 Art Exams/ Language Orals
30	04.05.26	Y11 Language Orals
31	11.05.26	Exams
32	18.05.26	Exams
SPRING BANK HOLIDAY		
33	01.06.26	Exams
34	08.06.26	Exams
35	15.06.26	Exams
36	22.06.26	ROA and PROM
37	29.06.26	Y11 Transition
38	06.07.26	
39	13.07.26	
40	20.07.26	

High Expectations



At Meadowhead, our conduct makes a difference



Conduct – Ready, Respectful and Safe

Ready to learn

- Attend school and lessons on time, with correct equipment
- Complete all classwork and homework on time to the best of your ability
- Take an active part in lessons

Respectful Community

- Follow all instruction first time
- Be kind and use appropriate language
- Take pride in our environment: keep it clean and tidy

Safe Environment

- Wear the correct uniform at all times
- Move sensibly around school and keep hands to yourself
- Help create a calm and safe place through positive behaviour

Uniform – Smart, Safe and the Same

- ✓ Meadowhead sweatshirt and polo shirt
- ✓ Plain black trousers or skirt with dark black tights
- ✓ Plain black leather – look shoes or trainers with a hard outer shell
- ✓ Minimal make-up and neutral nail varnish
- ✓ A wristwatch – smartwatches must be in 'airplane' mode
- ✓ A pair of stud earrings and / or single nose stud (under 1cm)
- ✓ Black or white head coverings that are securely fitted

- ✗ No canvas or 'soft' shoe/ trainers
- ✗ No jeans, leggings, shorts or joggers
- ✗ No hooped earrings, tongue studs, bracelets or necklaces
- ✗ No long nails – must be trimmed to end of finger/ thumb
- ✗ No loose fitting or brightly coloured head coverings
- ✗ No non – natural hair dyes or braid colours



Meadowhead School is a Halo Code School

Consequences

Verbal Warning

C1 – Name on the whiteboard

C2 – Conversation with staff member

C3 – After school detention

C4 – Internal suspension room

Mobile Phones, Ear buds and Headphones

Never seen, heard or used



Rewards

R1 – An excellent moment or piece of work

R2 – Excellence over a number of lessons

R3 – Sustained excellence or community service (Headteacher's commendation letter)

R4 – Outstanding performance or service (Governor's commendation letter)

Diamond Award – 500 points

Double Diamond – 1000 points*



Reward points contribute to the Cook Shield presented to the winning house in July.

Equipment

✓ School backpack (A4 size)

✓ A4 Homework folder

✓ Black and green ball point pens

✓ Pencil

✓ Ruler

✓ Rubber

✓ Sharpener

✓ Scientific calculator

✓ Glue stick

✓ Reading book (Year 7, 8 and 9)

✓ Printed timetable

✓ Water bottle

Meadowhead uniform - smart, safe and the same



Branded jumper: must be brought if not worn



Branded polo shirt



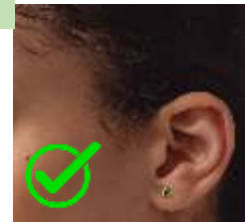
Black trousers or knee-length black skirt and dark black tights. Plain black abaya also permitted.



Black leather-look shoes or trainers with a hard outer shell; not soft (not safe), no coloured logos or stripes (not smart)



A waterproof outdoor coat can be worn at social times



Pair of ear studs – less than 1cm



Single nose stud

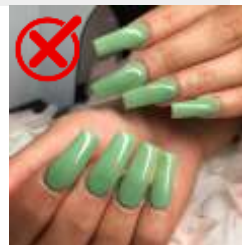


Wristwatch; smart watches must be in airplane mode (phones never seen, used or heard)



No jeans, leggings, jogging bottoms, shorts or hoodies (not smart). No caps or hats (not smart or safe).

No coloured nails (not smart) or long/extended nails (not safe)



No hooped earrings and other piercings (not safe)



No neckchains, rings and bracelets (not safe)

Uniform priorities for 2025-26



<p>1. Jewellery - Hoops, Piercings, bracelets and necklaces Students can wear a stud in each ear that is less than 1cm in diameter and one stud in the nose also less than 1cm in diameter. No other jewellery is permitted.</p>	<p>2. Coats - Hoodies, denim jackets and non-Meadowhead jumpers Students can wear a waterproof coat while moving round the building and during social times.</p>	<p>3. Shoes without a hard outer shell Students can wear plain back shoes or trainers. They must be black with no coloured logos, leather look and with a hard outer shell.</p>
<p>Why? Not “safe”; reducing the problems with removal at the start of PE lessons</p>	<p>Why? Not “smart” or “safe” as we cannot recognise students on the school site. Do not keep students dry in the rain.</p>	<p>Why? Not safe - do not provide protection in certain lessons or around school</p>

All non-permitted items should be confiscated **on sight by tutors or teachers** using an approach that parallels mobile phones – do not ask students to “just” remove as this wastes significant staff time later in the day. Non-permitted shoes are likely to be confiscated by year teams once alternatives have been provided. In short:

1. Ask student to remove, take name and pass to finance
2. Finance to issue C1 uniform and retain to end of the day
3. In the event of refusal, seek year team or On Call support. See more detailed flow chart on next slide.

Other Changes for 2025-26




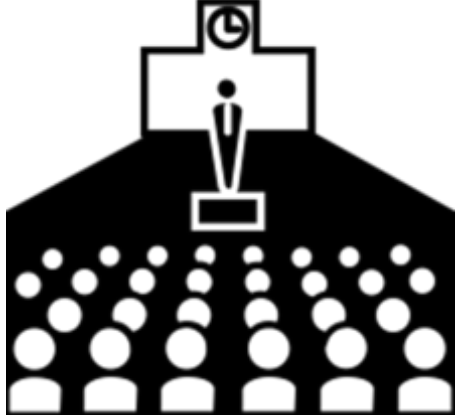

- Skirts should be around knee length to ensure safe and comfortable movement around school.
- Plain black abaya with logo now available from the school’s suppliers
- Nails must be short – “around the end of the finger and thumb”
- Religious and protective hair coverings must be black or white (removed “neutral colour”)

Issues around skirts, abaya, nails and hair/head coverings should be dealt by year teams and SLT only. Please use year team alert to pass on information and concerns.

Punctuality.....

Form Time Curriculum



Monday	Tuesday	Wednesday	Thursday	Friday
Supported Study	Supported Study	In the News	Assembly	Careers
				

Each morning there are important Daily Messages and updates delivered in form time to the students.

Supported Study - an email is being sent to Y11 Parents/Carers on a Monday morning with a link to the supported study resources. Each week will be related to a theme.

Attitude to learning

- Being Equipped
- Attendance to school.
- Aiming High - completing and presenting work to best of ability ALWAYS.
- Every Assessment matters - throughout the year.
- Homework
- Revision
- Organisation



Revision Guides

- Ask your child to speak to their subject teachers to find out which Tier paper they will be sitting in the final exams.
- Subject teachers may also guide students to which topics and types of books they will need for their revision.
- To order them you should log in to your My Portal account, they will be delivered to school by the external company.
- Once they arrive they will be brought to your child.
- In addition to this, the school make booklets which contain knowledge organisers for each subject.
- These Knowledge organisers are to be used during supported study to support further revision.



Year 11 Rewards Passport



Rewards

Reward No.1- September-December. Free Time.

This Reward entitles you to free time, off timetable, with your peers to enjoy a hot chocolate and cookie in the 6th form common room.



Reward No.2- January-April. Leaver's Hoodie.

This Reward entitles you to receive a potential discount on the price of your hoodie.



Reward No.3- April-June. Prom Invitation and Discounts.

This Reward entitles you to receive a potential discount on the price of your Year 11 Prom ticket.



What is it?

- Rewards passport.
- This is all about you and your performance in year 11, you need to shape your own year 11 journey.
- Termly awards available for everyone in year 11.

You are responsible for your own progress, behaviour and success. Good luck!!





Reward No. 1- September- December.

Reward No.1 - Free Time
September - December

Criteria

Achievement points	25+
Attendance	95% +
Number of lates (including to school and lessons)	Less than 5
Attendance to Form	95% +
Number of H1s	Less than 5

--	--

Form Tutor to sign each half term

- This Reward entitles you to a lesson off timetable with your peers to enjoy a hot chocolate and cookie in the 6th form common room.

How?

- Achievement Points.
- Attendance to school.
- Punctuality.
- Attendance to after school intervention/P6 sessions.
- Homework H1's



Reward No.1 - Free Time September - December

Criteria

Achievement points	25+
Attendance	95% +
Number of lates (including to school and lessons)	Less than 5
Attendance to Form	95% +
Number of H1s	Less than 5

--	--

Form Tutor to sign each half term

Attendance to after school revision sessions

Subject teacher must sign each box

English/Maths revision sessions

Revision sessions

Evidence of revision at home
Class teacher to sign

Important Notice! Reward No. 3- Prom Night.



- **We reserve the right to remove students from the guest list for the Prom at any stage prior to Prom night. *60 were not allowed to go last year***
- **Suspensions and poor behaviour across the school year will be taken into consideration when making the final decision.**
- **Students who fail to attend their GCSE examinations in the Summer Series will automatically lose their invitation to the Prom.**
- **In addition to this, parents/carers will receive an invoice for each examination missed. As a guide, the current costs per subject entered are over £50.**

Tips for Parents- how can I help?

- Talk to your child about their work, check the quality, presentation, understanding, completeness and accuracy. Use as a motivational tool, weekly check in.
- Ask them to explain their work to you if you don't understand, this is a great revision tool for them.
- Make a note of key dates.
- Visit ClassCharts to check their homework, Achievement points, behaviour points, attendance and punctuality.
- Support them with independent study- help them with organisation and timing, reward and praise when necessary.

Tips for Parents- how can I help?

- Work with and communicate with the school, we all want the best for your child and want to work together to support them.
- Each morning there are important Daily Messages and updates delivered in form time to the students.
- Supported Study - an email is being sent to Y11 Parents/Carers on a Monday morning with a link to the supported study resources. Each week will be related to a theme. See the QR code for the link to our website
- Seek and give support near exam season, monitor changes in behaviour- stress related?
- Enforce good routines, sleep patterns, usage of technology etc.

