

A' Level Music

Edexcel A' Level Music

This is an exciting and enriching course which is well respected by universities and other higher education establishments. The course allows you stretch your musical skills to explore a variety of different musical styles through performing, composing and listening appreciation tasks.

"To send light into the darkness of men's hearts - such is the duty of the artist."
Robert Schumann (1810-1856)

What will I do on this course?

A level Music is a mix of creative, practical, academic and analytical skills. It is suitable for those students who wish to extend the skills acquired at GCSE and for musicians who have achieved grade 5 on their chosen instruments.

You will compose, listen to and analyse a wide variety of music from 1600 to the present day. All students need to be dedicated musicians as performance contributes as a significant part of the course.

You will learn how to:

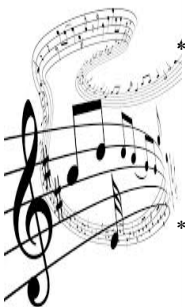
- Analyse a piece of music in detail
- Write music effectively using 4 part harmony
- Compose music to a given brief
- Construct a varied performance programme
- Rehearse effectively



How will I be assessed?

The course will be assessed in the following areas;

- * **Performance:** In your first year you will perform pieces on an instrument (or instruments) of your choice. By the end of Y13, your performance recital should last for a minimum of 8 minutes. **30%**
- * **Composition:** In both years you will compose two pieces, one will be in a style of your own choice/ or to a set brief and the second will be composed for one of the four briefs assessing technique set by the exam board in Y13. Both compositions need to last for a combined total of 6 minutes. **30%**
- * **Listening & Appraising:** In each year you will study a selection of pieces which you will be asked about in an external listening examination. The genres you will study this year include: Film Music, Instrumental Music, Popular Music and Jazz, Vocal Music, Fusions and New Direction. **40%**



	Number	Timing	Percentage of final mark
Listening exam	1	May, Year 11	40%
Compositing	2	Continuous in Year 10/11	30%
Performance	2	Continuous Year 10/11	30%

What skills do I need?

- You should be at least *Grade 5* standard at the start of the course.
- Enjoy composing and performing
- to be willing to demonstrate determination and commitment throughout all areas of the course



Entry requirements:

GCSE Music - grade 5 or BTEC - Merit as well as the ability to play an instrument to a high level (G5 or higher).

Where will I find more information?

Speak to Mrs Weale, Mr Watts or Mr Johnson

Any other essential information?

There are many careers that lead on from A level Music such as:

Peripatetic teaching, Sound Engineer, Solo Performer, Music Teacher, Instrumentalist, Music production, Session Musician, Composer, Song Writer, Disc Jockey

Universities and employers are frequently impressed by students who have studied A level Music due to the range of skills it can demonstrate such as organisation, reliability, commitment, creativity and self-discipline.

