

A close-up, black and white photograph of piano keys, showing a row of black keys and a row of white keys. The keys are slightly out of focus, creating a sense of depth. A light blue curved line separates the image from the text below.

Y7 Time Signature Support

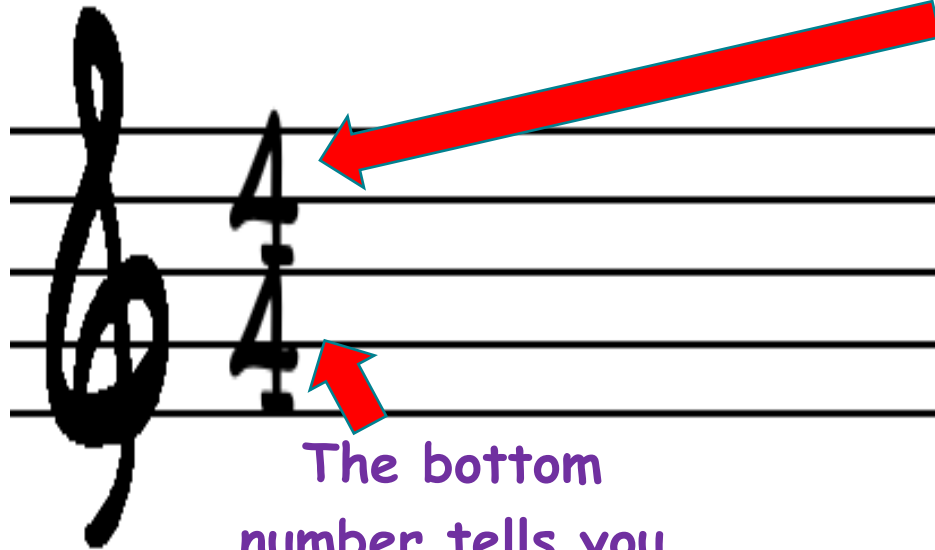
What is a time signature?

A time signature tells you how many beats there are in a bar of music and is found at the beginning of the stave after the treble clef



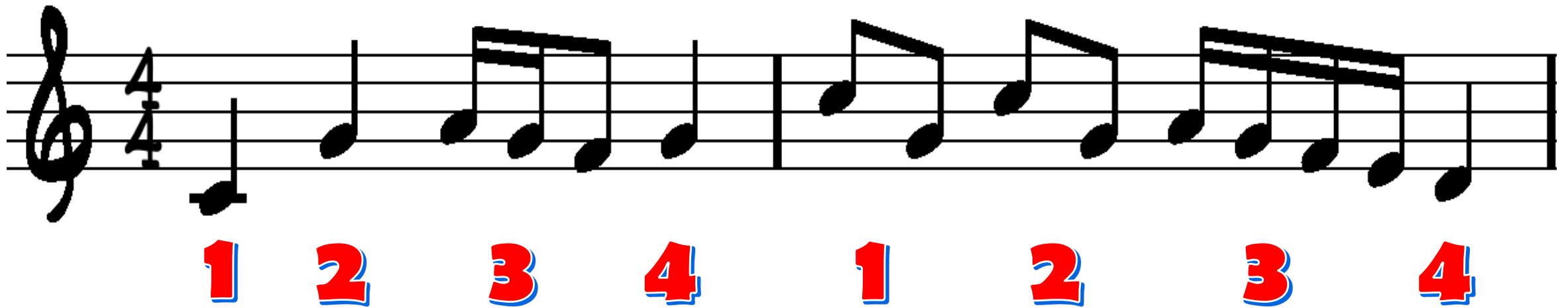
Even if you are not reading music it is important to know the time signature so you understand the 'feel' of the piece. Where to put in the strong beats.

What the numbers tell us...

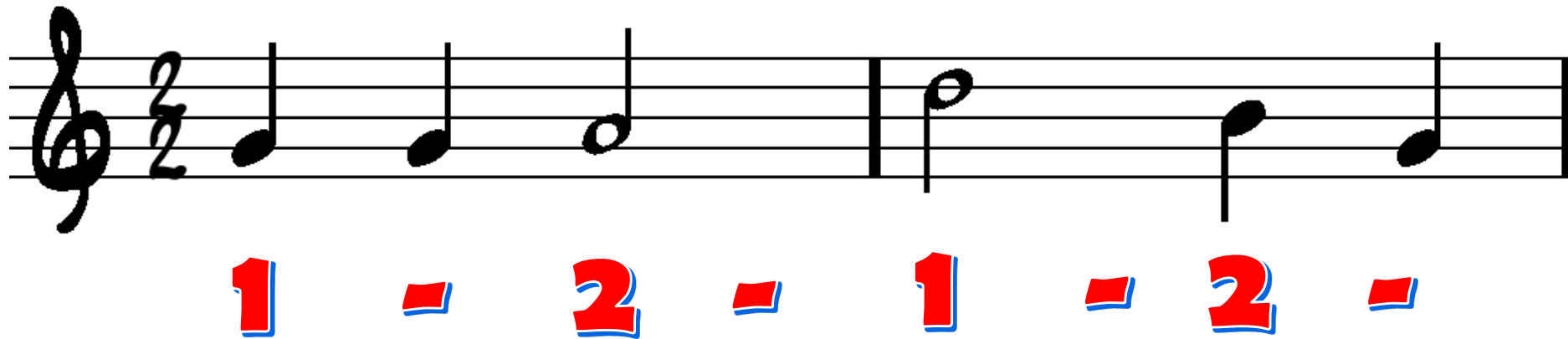


The top number tells
you **HOW MANY**
beats there are in
a bar

The bottom
number tells you
what **TYPE** of
beats (the note
values)

[illegible]

What the numbers tell us...



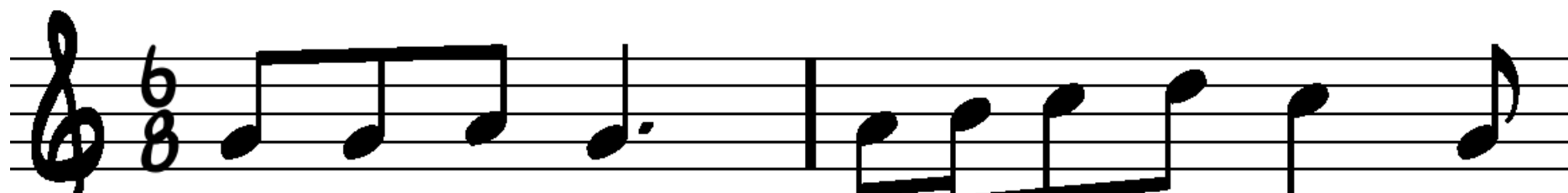
You could think that this could also be 4/4. You would be correct. But as most of the beats are in 2 beat phrases we would normally opt for 2/2

What the numbers tell us...


Now, remember we are counting in $\frac{1}{2}$ beats!



Musical notation for 3/8 time signature. The first measure contains three eighth notes (C4, D4, E4). The second measure contains a dotted quarter note (C4). The third measure contains a beamed eighth-note pair (F4, G4) followed by a quarter note (A4). The fourth measure contains a dotted quarter note (B4) followed by an eighth note (C5). Below the staff, the counting sequence is: 1 2 3, 1 2 3, 1 2 3, 1 2 3.




Musical notation for 6/8 time signature. The first measure contains three eighth notes (C4, D4, E4) followed by a dotted quarter note (C4). The second measure contains a beamed eighth-note pair (F4, G4) followed by a quarter note (A4), a dotted quarter note (B4), and an eighth note (C5). Below the staff, the counting sequence is: 1 2 3 4 5 6, 1 2 3 4 5 6.



2
2

How many
beat in a
bar?


What kind
of beats?



3
2

How many
beat in a
bar?


What kind
of beats?



4
2

How many
beat in a
bar?

What kind
of beats?



2
4

How many
beat in a
bar?

What kind
of beats?

3
4


How many
beat in a
bar?

What kind
of beats?

How many
beat in a
bar?

What kind
of beats?


4
4



How many
beat in a
bar?

What kind
of beats?


3/8



How many
beat in a
bar?

What kind
of beats?

2
8



How many
beat in a
bar?

What kind
of beats?

4
8



-
- The image displays three musical staves, each representing a different time signature: 3/2, 3/8, and 4/4. Each staff contains a sequence of notes and rests, with asterisks marking specific beats.
- Staff 1 (3/2 time):** The first staff shows a sequence of notes and rests. Asterisks are placed above the first, third, fifth, seventh, and ninth beats.
 - Staff 2 (3/8 time):** The second staff shows a sequence of notes and rests. Asterisks are placed above the first, third, fifth, seventh, and ninth beats.
 - Staff 3 (4/4 time):** The third staff shows a sequence of notes and rests. Asterisks are placed above the first, third, fifth, seventh, and ninth beats.