

The Living world

This is the theme for your Art lessons this year

The following tasks are set for anyone who is self isolating. You don't need to do them all. They are designed so you can do one a week. If you are only off school for one week, just do the first task, but if you are off for longer, or more than once, you can do others



Year8- Art

TASK 1. This week you will make a drawing of an endangered animal.
You will

- Learn about animals that are endangered
- Practise accurate drawing from a secondary source (a picture)

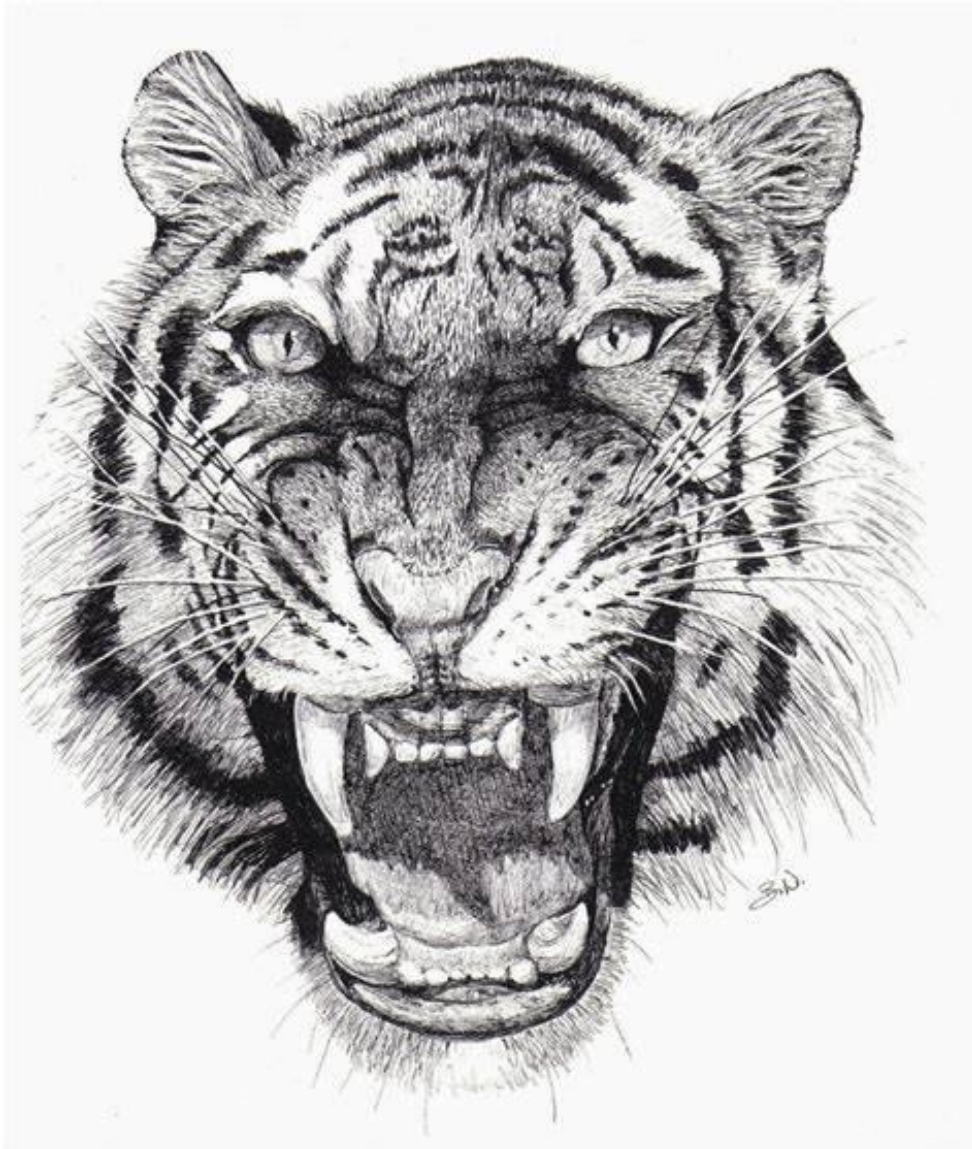
Much of the incredible wildlife on our planet is in trouble because of human activity. You are going to choose an animal that is endangered to make a study drawing.

See the following slides for an explanation- read through carefully!

Use the internet, or a book, to look at images of endangered animals. Find a good quality, clear image to draw from



Make an A4, detailed drawing of your chosen animal.



Tips

- Start by sketching the rough shape lightly, filling your paper
- Your first shape won't be right straight away- so don't press on!
- Then keep refining and improving the shape until it looks more accurate
- Once you're happy with the shape, start to add detail
- Does the animal have any patterns?
- What is its texture (feel)? Is it furry, scaly etc. How can you show this with your pencil?
- Try to add shading- look at how the light falls on the animal and where you can see shadows- try to show this. It is sometimes easier to work from a black and white picture to help with this
- Keep going, adding as much detail as you can.
- Remember the key is to keep LOOKING!



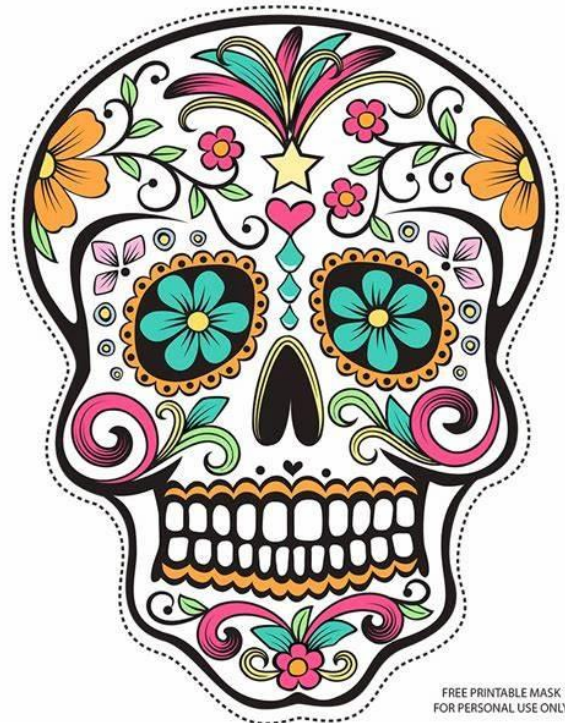
Year8- Art

TASK 2. This week you design a Mexican Day of the Dead Skull. You will

- Research sugar skulls from the Day of the Dead festival to get inspiration
- Draw a skull in detail, aiming for an accurate drawing
- Personalise your design, adding your own decoration

See the following slides for an explanation- read through carefully!

In Mexico, the people celebrate the “Day of the Dead” festival every November. They get together and celebrate the lives of family members who have died. Although these skulls look spooky and strange to us, the Mexicans use decorated skulls to brighten their homes and streets, and they even make sugar skull sweets. It is a positive celebration with a party atmosphere. You could do some research about this for yourself. Using these as inspiration, you are going to draw and decorate a skull, designing your own Day of the Dead skull



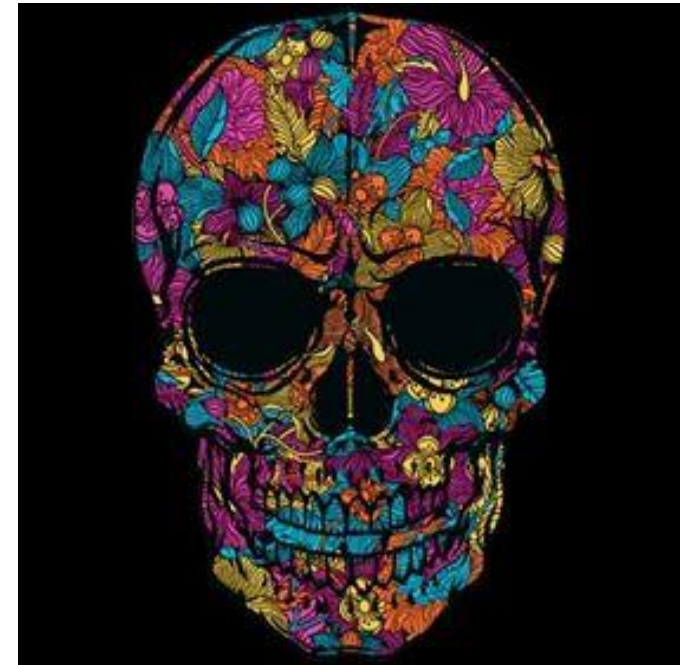
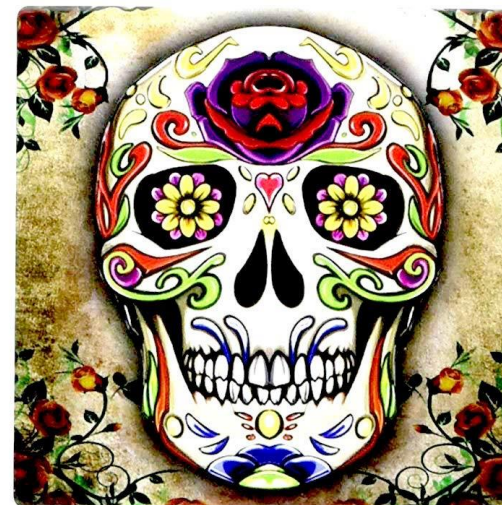
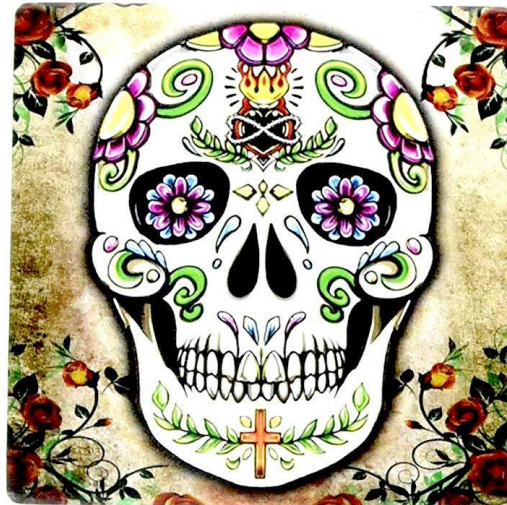
FREE PRINTABLE MASK
FOR PERSONAL USE ONLY



Make a careful drawing of one of these. Sketch it lightly to get the shape, then add some of the shadows you can see...



Then add your decoration! You could pick any theme and use colour if you have it.





Year8- Art

TASK 3- This task will last you at least 2 hours (2 weeks of self isolation)
You will...

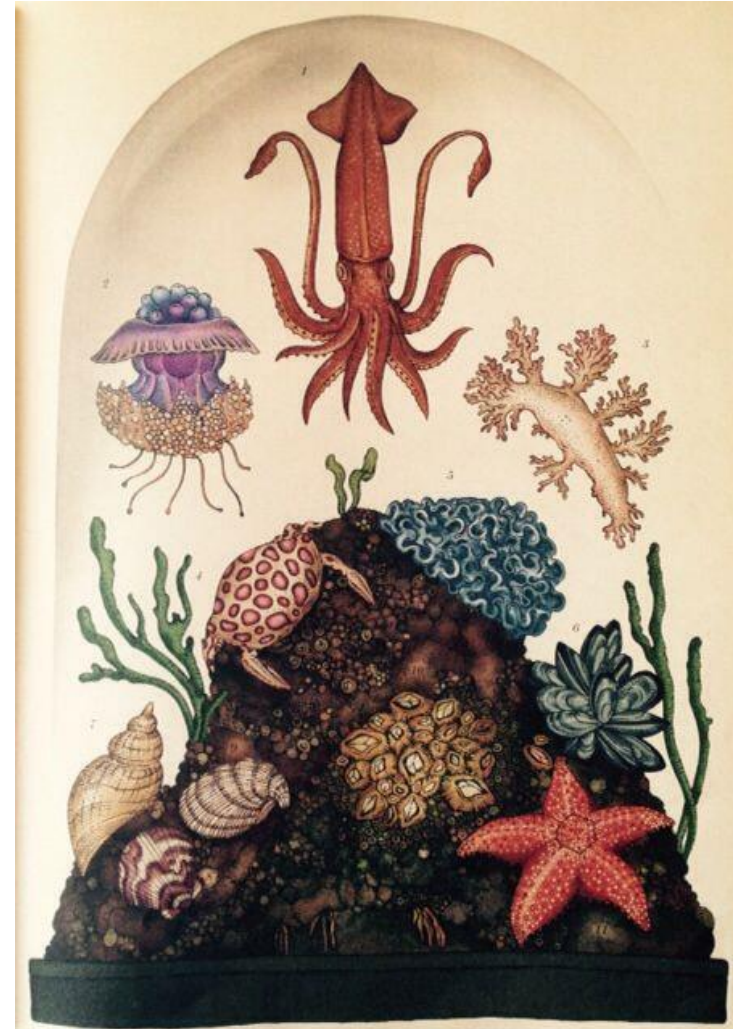
- Research fish and underwater worlds
- Look at the work of illustrator Katie Scott for inspiration
- Create your own imaginative fish tank world

Lesson 1- sketch out and plan your design and research images for ideas

Lesson 2- develop your design adding colour, shading, texture and detail

See the following slides for an explanation- read through carefully!

Katie Scott is an illustrator who produces detailed illustrations that show the natural world in every detail. Here, she has created worlds inside fish tanks that show all the beautiful, detailed patterns, shapes and textures she sees in nature. You are going to use this as inspiration to create your own imaginative fish tank world. You should find images of real creatures so you can study their shapes, patterns and textures.



To do this task well, spend 2 weeks or 2 lessons on it. In the first week, sketch out and research your ideas. In the second week, spend time adding detail and finishing it really well

- Draw a tank shape like this onto A4 paper
- Use your imagination to create a fish tank world, filled with incredible fish and other underwater creatures
- You can develop the fish tank world by adding other objects, like plants or rocks- it's your world, so anything goes
- Use research images of real fish and plants to get ideas. Your fish might be exactly like one you've found, or you could invent new species.
- Add detail, like scales, shading and colour





Year8- Art

TASK 4. This week you will make a portrait drawing of a famous person.
You will

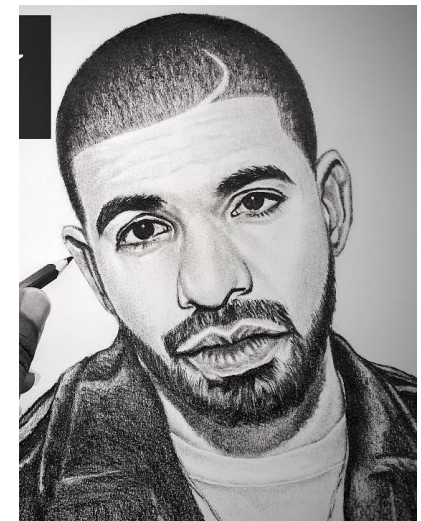
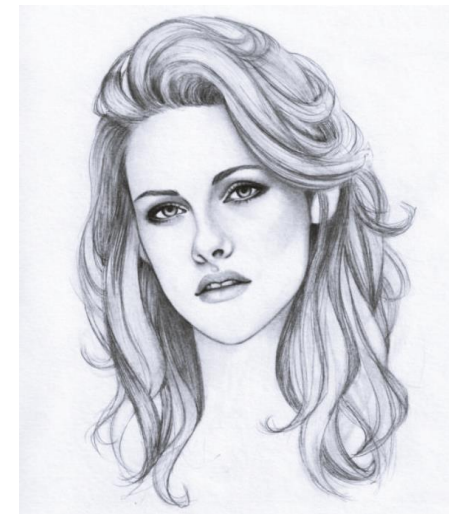
- Observe the proportions and feature shapes in the face as accurately as possible
- Look for tone and add shading and detail

Portraits are difficult, so the more practise you can do the better. Work just in pencil, so you can rub out and keep improving the drawing.

You will need to find a good quality, clear image of a famous person to draw from. The more detailed the image, the easier it will be to see the shapes and detail.

In school, you will probably have drawn a celebrity using the gridding method. This time, try to draw without the grid!

- Find a good quality image. Make sure the image only shows the head and shoulders- you do not need to draw the full figure.
- You might find the shading easier if the image is in black and white. If you can, find a black and white image, or edit it to make it black and white
- Start by sketching out the face. Look at exactly where the features appear. Look at the shapes of the features carefully
- Begin lightly so you can adapt and improve the drawing, changing things if you think you need to
- Try to include the neck and shoulders if you can see them
- Finally look for shading on the face, on each feature and around the features.
- Try to show a full range of tones, from very dark to very light.





Year 8- Art

TASK 5. This week you will make a study of a plant or flower. You will

- Research images to work from
- Make a detailed observational study of your chosen plant or flower, looking at shape, texture and tone. You may work in colour if you have colours at home

Plants are a varied and fascinating part of our natural world. Once you start to notice them, their shapes, textures and colours are intricate and suprising

Start by looking at plant life in general. You might like the symmetrical beauty of a flower, the leaf shapes of a plant or the strange appearance of some more unusual plants. Spend time finding something you find interesting...you could look in books, on the internet, or you might have plants in your house or garden that you'd like to study.



Use any media that you have at home

