

A Level Photography – Summer Project



Documentary Photography

Documentary Photography will be a style of photography interwoven throughout the A Level course. At the beginning of the course we will also revisit some of the major elements in how to successfully take a photograph.

Documentary photography refers to a popular form of photography used to chronicle events or environments both significant and relevant to history and historical events as well as everyday life.

The work set is aimed to ignite your passion for photography and get your creativity flowing. We want to see what skills you currently have, what level of photographer you are and how well you can analyse a photographer and his/her work.

Task 1

Complete a presentation on 2 of the following documentary photographers. We will ask you to share this with the group in September.

Irving Penn

Brassai

William Eggleston

Martin Parr

Richard Wentworth

Stephen Shore

Angus Boulton

Shirley Baker

Richard Billingham

Chris Steele-Perkins

Joel Meyerowitz

Lee Friedlander

Task 2

Inspired by photographers you have just researched into, take 2 photographs based on each of the following themes:

Messy

Bright

Dark

Metallic

Time

Reflections

Laughter

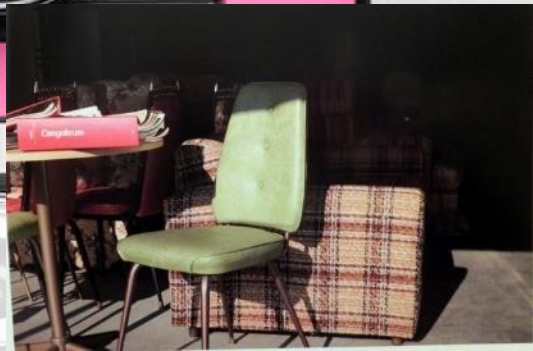
Summer

Fragile

Light

You will present these photographs to the group in September.

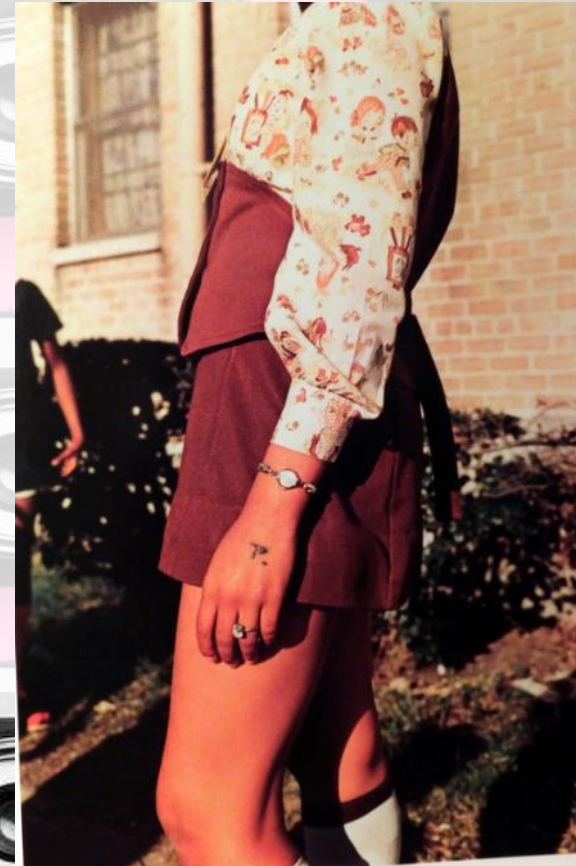
Please ensure you bring this work with you during your first lessons in September.

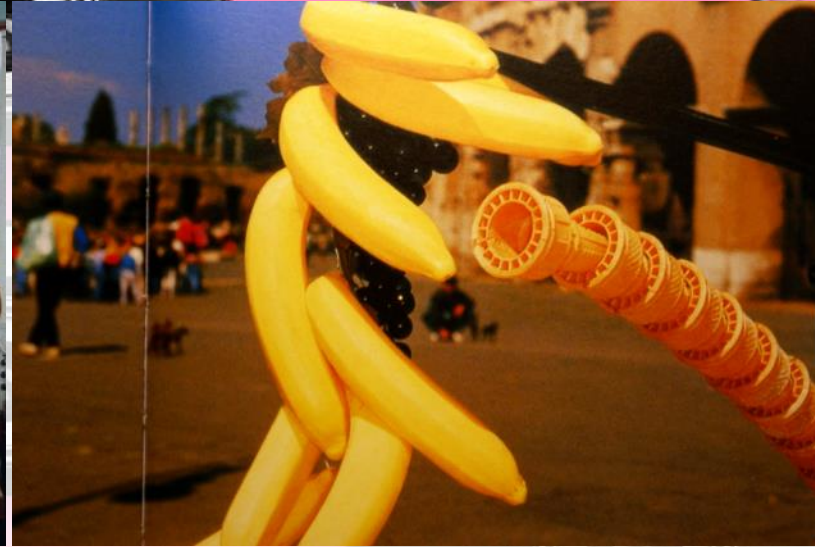


Photographers such as **WILLIAM EGGLESTON** and **MARTIN PARR** often **celebrate the ordinary** by taking photographs of everyday objects and scenes to **discover something interesting about the ordinary**. To do this, they may **alter the angle of view** or **isolate items** from their usual surroundings.

WILLIAM EGGLESTON

His apparent lack of interest in the traditional photography was a challenge he wanted to accept and succeed in. William Eggleston wanted to go against the traditional photography style. His output is characterized by images that look like 'snapshots' meaning that refined compositions and imbued meaning appeared to be absent.





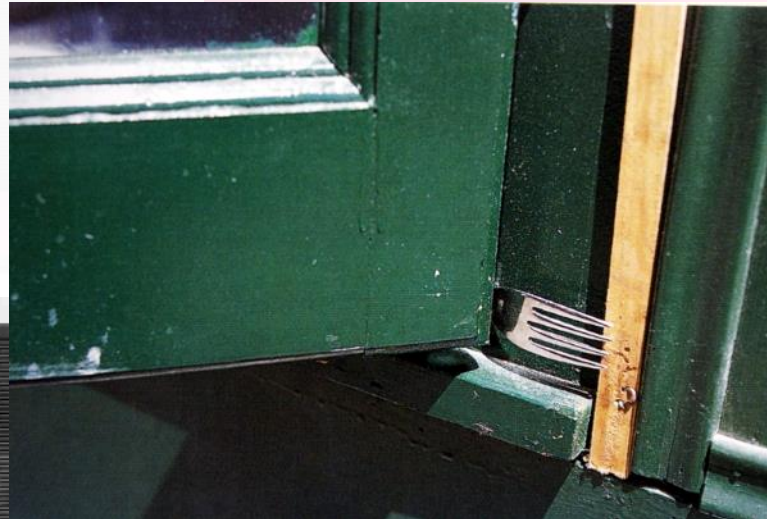
MARTIN PARR

His photography is distinctive and very well regarded in the art photography world. His work is in major public collections such as the Tate Gallery UK. His style has become recognisable for his choice of subject matter and his strong colour enhanced by the use of a ring flash that intensifies local colour.



Richard Wentworth

has a unique approach to the everyday and makes images of the insignificant and accidental occurrences in the urban environment in England and on travels in Europe



RICHARD WENTWORTH, GENOA, ITALY, 2004



Stephen Shore



Joel Meyerowitz



Shirley Baker



Richard
Billingham

Lee Friedlander



Angus Boulton



Chris Steele-Perkins

