

KNOWLEDGE ORGANISER

BIG IDEA: Genes

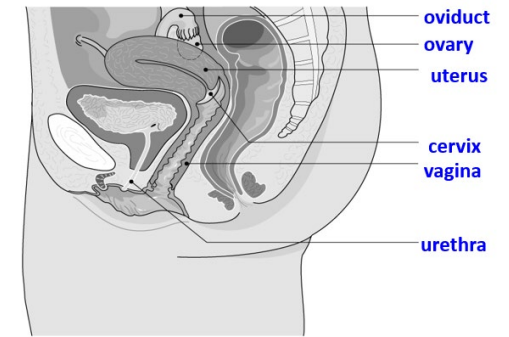
TOPIC: Human reproduction

Key Word	Definition
Reproductive system	All the male and female organs involved in reproduction
Penis	Organ which carries sperm out of the male body
Vagina	Where the penis enters the female body and sperm is received.
Embryo	The developing baby during pregnancy.
Gamete	The male gamete (sex cell) in animals is a sperm, the female an egg.
Fertilisation	Joining of a nucleus from a male and female gamete
Ovary	Organ which contains eggs
Testes	Organ where sperm are produced
Uterus	Where the baby develops in a pregnant woman
Ovulation	Release of an egg cell from the ovary
Menstruation	The monthly cycle, beginning with the period that is controlled by hormones and allows a woman to get pregnant

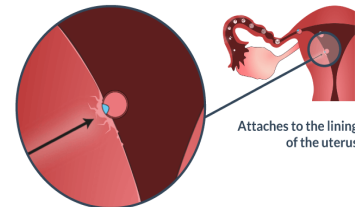
The male reproductive organs



The female reproductive organs



If an egg is fertilised it settles into the uterus lining.

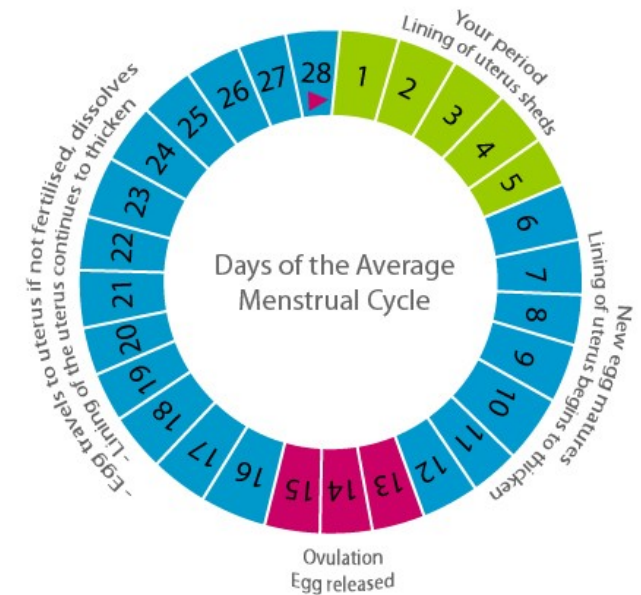


Some blood vessels are ruptured and the lining of the uterus is disrupted

The menstrual cycle is where the lining of the uterus is lost.

This prepares the female for pregnancy and stops if the egg is fertilised by a sperm.

The menstrual cycle lasts approximately 28 days.



The developing foetus relies on the mother to provide it with oxygen and nutrients, to remove waste and protect it against harmful substances.

