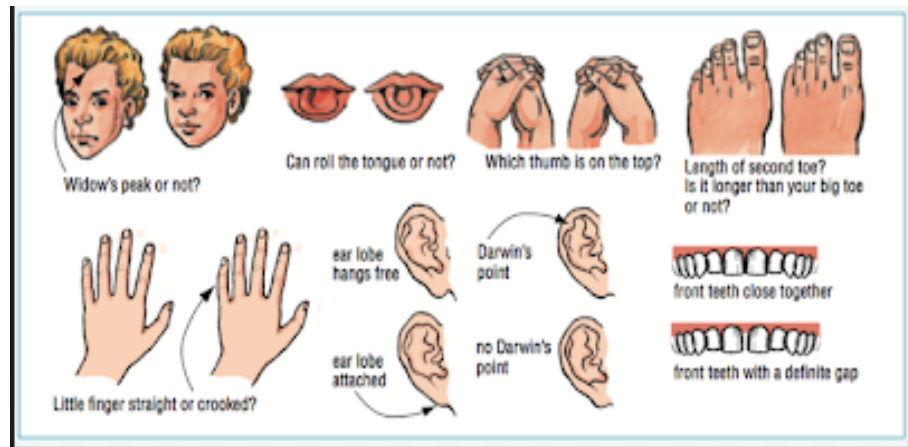


## KNOWLEDGE ORGANISER

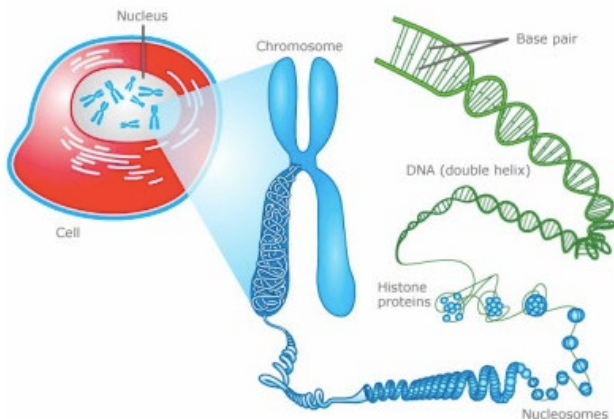
**BIG IDEA:** GENES

**TOPIC:** INHERITANCE

Key Word	Definition
Inherited characteristics	Features that are passed from parents to their offspring
DNA	A molecule found in the nucleus of cells that contains genetic information
Chromosomes	Thread like structures containing tightly coiled DNA
Gene	A section of DNA that determines an inherited characteristics



Inherited characteristics are the result of genetic information, in the form of sections of DNA called genes, being transferred from parents to offspring during reproduction.



Chromosomes are long pieces of DNA, found in the nucleus of cells, which contain many genes.

Gametes (egg or sperm in animals) carrying half the total number of chromosomes of each parent, combine during fertilisation

The DNA of every individual animal is different, except for identical twins

There is more than one version of each gene e.g. different blood groups (A,B,AB,O)

It is the inheritance of these different versions that lead to different characteristics