






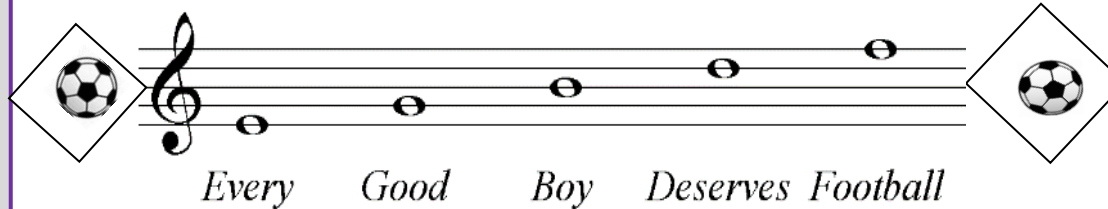
KEY VOCABULARY

- Stave/Staff** - the five horizontal lines on which music is written.
- Treble Clef** -  a symbol at the start of a piece of music which tells us that the notes are middle to high pitched.
- Time Signature** - numbers at the start of the music which tell us how many beats are in a bar.
- Bar** - a section of music containing a set number of beats set by the time signature.
- Crotchet** -  a one beat note
- Minim** -  a two beat note
- Semi-breve** -  a four beat note
- Quaver** -  a $\frac{1}{2}$ beat note - often grouped in twos 
- Octave** - the distance of 8 notes
- Scale (major)** - a series of 8 notes ascending and descending in step (conjunct)

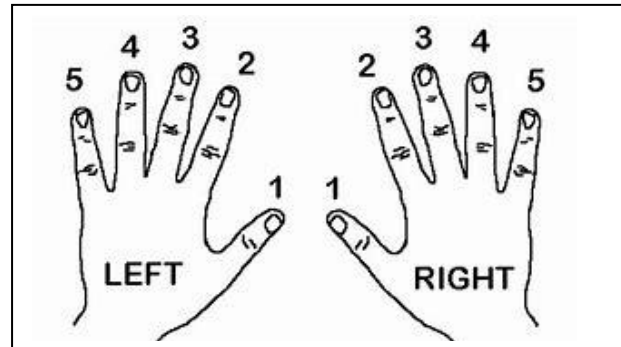
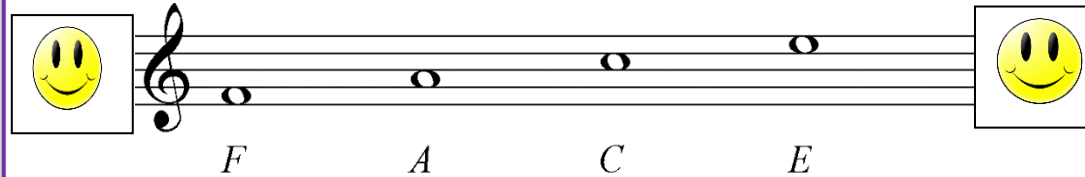
Y7 KEYBOARD STUDIES



MUSICAL NOTES ON THE LINE



MUSICAL NOTES IN THE SPACES



DID YOU KNOW?

The first electronic keyboard was invented in 1874 and transmitted its sound through telegraph wires!

"I believe in using the entire piano as a single instrument capable of expressing every possible musical idea"

Oscar Peterson

WIDER LISTENING

Every Good Boy Deserves Football

<https://youtu.be/vi25BFJy5x8>

C Is To the Left of the Two Black Keys

<https://youtu.be/aovVKP02noU>

Key Musical Elements;
(for Listening & Appraising)

Dynamics:

pp, p, mp, mf, f, ff
Crescendo
Diminuendo

Rhythm and Metre:

4/4, 3/4, 2/4
Crotchet, Quavers, Minim,
Semi-breve

Melody

Step or leap movement

Octave

