

KEY VOCABULARY

- Structure** - how the music is built up in sections (A, B, C, D etc.)
- Binary** - music that has two sections; A B
- Ternary** - music that has three sections; A B A
- Rondo** - music where the first section A keeps returning between new contrasting sections B, C, D etc.
- Percussion** - instruments that produce a sound by the surface being hit
- Melody** - the main tune
- Harmony** - the backing tune/part that blends with the melody
- Bass** - the lower pitched notes
- Pitched** - having a pitch (high and low notes)
- Unpitched** - Not having a pitch

Unpitched Percussion Instruments



BASS DRUM



SIDE/SNARE DRUM



CYMBALS



MARACAS



CABASA



TRIANGLE

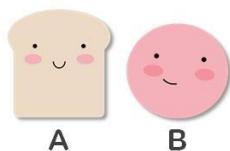
Y7 STRUCTURE AND PERCUSSION INSTRUMENTS

"Rhythm is something you either have or don't have, but when you have it, you have it all over."

Elvis Presley

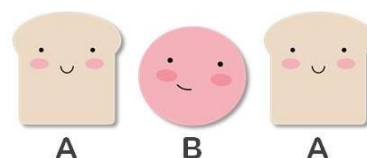
BINARY FORM

BINARY FORM (AB) describes music in two sections;
A - the first section (main theme), and
B - a new contrasting section



TERNARY FORM

TERNARY FORM (ABA) describes music in three sections;
A - the first section (main theme), and
B - a new contrasting section
A - the first section returns



Pitched Percussion Instruments



XYLOPHONE



GLOCKENSPIEL



TIMPANI



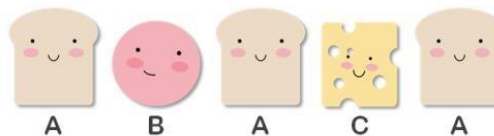
TUBULAR BELLS



PIANO

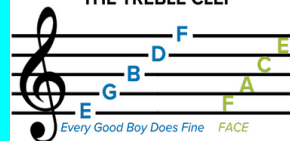
RONDO FORM

RONDO FORM (ABACADA...) Describes music where the first section A (main theme) keeps returning between new contrasting sections B, C, D etc.

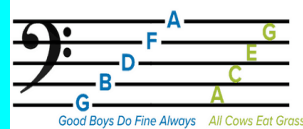


Notation Recall

THE TREBLE CLEF



THE BASS CLEF



WIDER LISTENING

'Minuet in G' by J.S Bach
(Binary form)

'Evening Song' by Daniel Gottlob Turk
(Binary form)

'Humming Song from Album for the Young (Op. 68, No. 3) by Robert Schumann
(Ternary form)

'Rondo in D major K.311' by Mozart
(Rondo form)

'Appalachian Spring' by Aaron Copland
(Theme and Variation)

