



KEY VOCABULARY

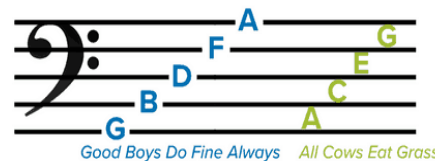
- Treble Clef** -  a symbol at the start of a piece of music which tells us that the notes are middle to high pitched.
- Bass Clef** -  a symbol at the start of a piece of music which tells us that the notes are middle to low pitched.
- Accompaniment** - a backing part that harmonises with the melody.
- Staff Notation** - music notated on a staff/stave.
- Time Signature** - numbers at the start of the music which tell us how many beats are in a bar. E.g. $\frac{4}{4}$ $\frac{2}{4}$ $\frac{3}{4}$
- Bar** - a section of music containing a set number of beats, separated by a **Bar line**.
- Octave** - the distance of 8 notes
- Scale (major)** - a series of 8 notes ascending and descending in step (conjunct)

Y7 KEYBOARD STUDIES

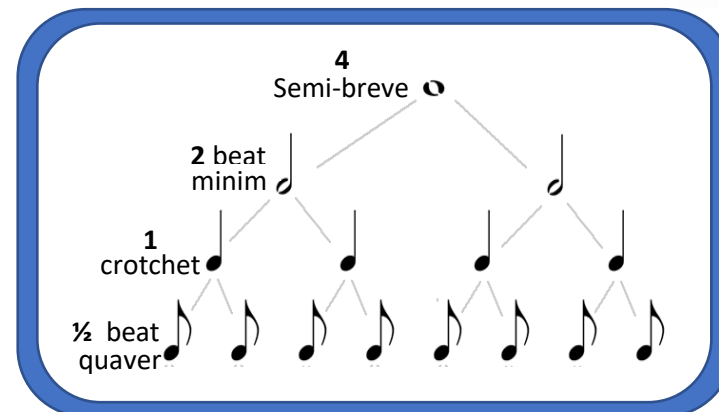
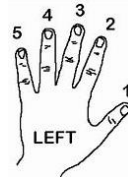
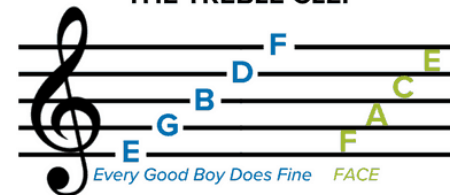
2



THE BASS CLEF



THE TREBLE CLEF



DID YOU KNOW?

The first piano was invented in the 1700s by Bartolomeo Cristofori



"Color is the keyboard, the eyes are the harmonies, the soul is the piano with many strings. The artist is the hand that plays, touching one key or another, to cause vibrations in the soul."

Wassily Kandinsky

WIDER LISTENING

Remembering the Bass Clef

<https://www.youtube.com/watch?v=PMk-q5LCiAs>

Playing the keyboard with two hands

<https://www.youtube.com/watch?v=q8NQr5vTdzU>

Playing 'Twinkle, Twinkle'

<https://www.youtube.com/watch?v=zE0Fwm7gv1c>

Key Musical Elements: (for Listening & Appraising)

Dynamics:

pp, p, mp, mf, f, ff
Crescendo
Diminuendo

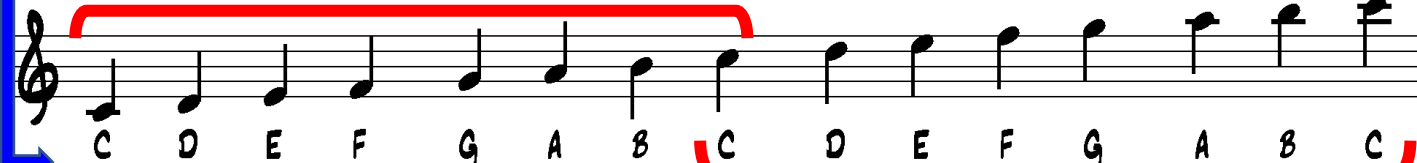
Rhythm and Metre:

4/4, 3/4, 2/4
Crotchet, Quavers, Minim,
Semi-breve

Melody

Step or leap movement

Octave



Octave