

## KNOWLEDGE ORGANISER

**BIG IDEA:** Genes

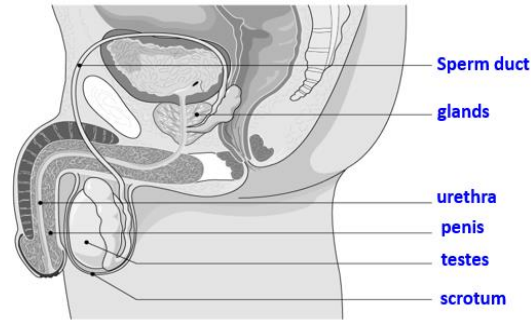
**TOPIC:** Human reproduction

Key Word	Definition
Reproductive system	All the male and female organs involved in reproduction
Penis	Organ which carries sperm out of the male body
Vagina	Where the penis enters the female body and sperm is received.
Embryo	The developing baby during pregnancy.
Placenta	Organ that provides the embryo with oxygen and nutrients and removes waste
Amniotic fluid	Liquid that surrounds and protects the baby
Umbilical cord	Connects the embryo to the placenta
Gamete	The male gamete (sex cell) in animals is a sperm, the female an egg.
Fertilisation	Joining of a nucleus from a male and female gamete
Ovary	Organ which contains eggs
Testicle	Organ where sperm are produced
Oviduct	Carries an egg from the ovary to the uterus and is where fertilisation occurs
Uterus	Where the baby develops in a pregnant woman
Ovulation	Release of an egg cell from the ovary

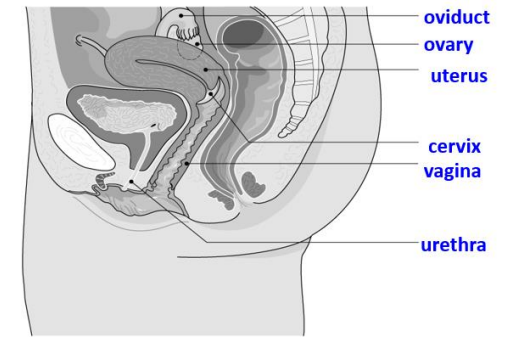
The developing foetus relies on the mother to provide it with oxygen and nutrients, to remove waste and protect it against harmful substances.



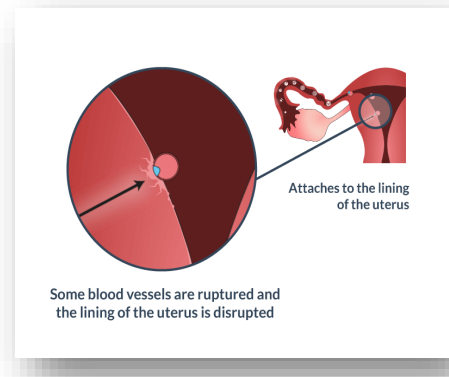
### The male reproductive organs



### The female reproductive organs



If an egg is fertilised it settles into the uterus lining.



The menstrual cycle is where the lining of the uterus is lost.

This prepares the female for pregnancy and stops if the egg is fertilised by a sperm.

The menstrual cycle lasts approximately 28 days.

