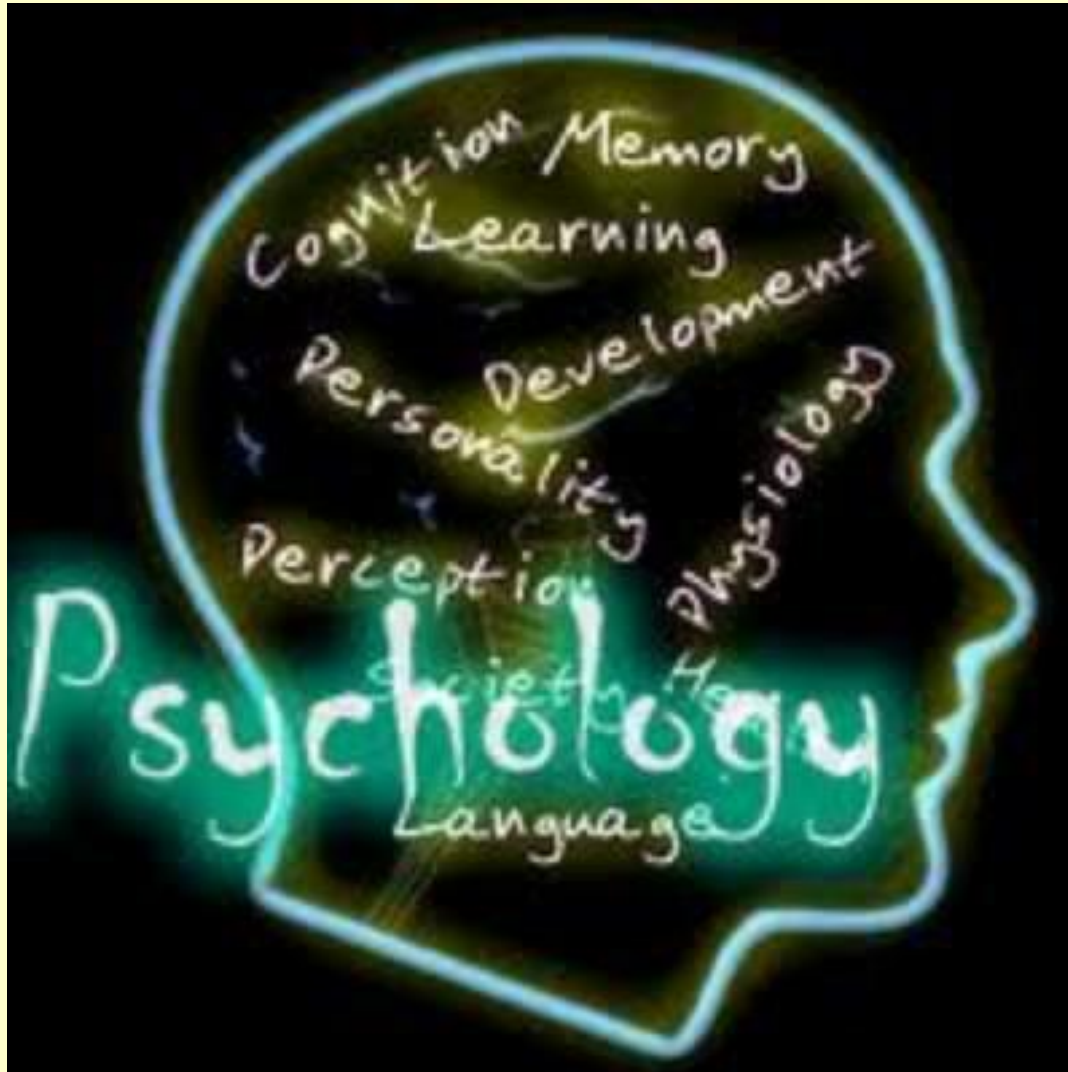


Introduction to A Level Psychology



PSYCHOLOGY

- **Your teachers will be:**
- **Miss Lane**
- **Mrs Rowett**

What is psychology?

What is psychology?



- Psychology is the study of **human mind and behaviour**.
- It is a **scientific** subject so it will predict behaviour.
- Psychologists can give **therapies** to help change behaviour e.g. treating phobias.
- The theories can be used to change **policies**.

What can you expect?

- A wide range of topics being studied.
- Lots of different view points that are considered.
- Exam questions ranging from one mark multiple choice to 16 mark essays.
- All exam based, no course work.

The A level course.

A level Psychology		
Paper 1: Introductory topics in Psychology	Paper 2: Psychology in Context	Paper 3: Issues and options in Psychology
Content – <ul style="list-style-type: none">* Social Influence* Memory* Attachment* Psychopathology	Content – <ul style="list-style-type: none">* Approaches in Psychology* Biopsychology* Research methods	Content – <ul style="list-style-type: none">* Issues and debates* Schizophrenia* Gender* Forensic Psychology
Assessment – <ul style="list-style-type: none">* 2 hour written exam* 96 marks33.3% of A level	Assessment – <ul style="list-style-type: none">* 2 hour written exam* 96 marks33.3% of A level	Assessment – <ul style="list-style-type: none">* 2 hour written exam* 96 marks33.3% of A level

Paper 1

1: Memory

The multi-store model

The working memory model

Memory in everyday life

2: Attachment

Phases of attachment development

The effects of disruption of attachment

3: Social Influence

How and why are people influenced by those around them?

4: Psychopathology (Abnormality)

Defining & explaining psychological abnormality

Treating abnormality

Paper 2

1: Approaches to Psychology

Behaviourist, Biological, Cognitive approaches.

2: Psychopathology (Abnormality)

Defining & explaining psychological abnormality

Treating abnormality

3: Research Methods

What is the right way to conduct experiments and record their results?

Paper 3

1: Issues and debates

Nature/nurture, free will/determinism

2: Schizophrenia

Defining schizophrenia, causes and treatment.

3: Forensic

Offender profiling, causes of criminality and effectiveness of prisons.

4. Gender

Sex role stereotyping, explanations of gender and atypical gender development

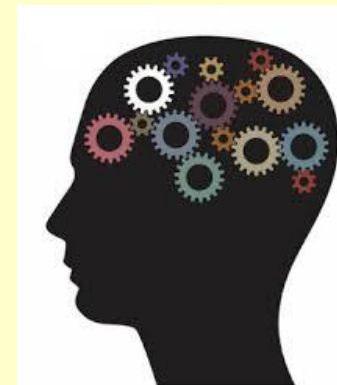
How is it examined?

3 exams (90 mins each):

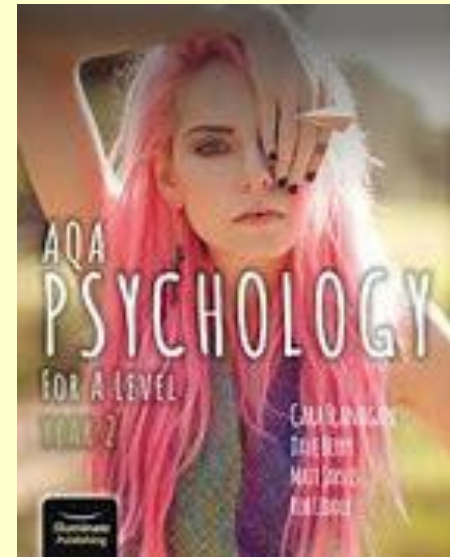
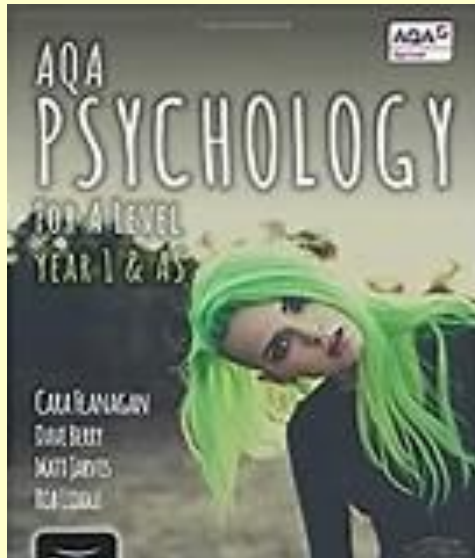
Paper 1: (a variety of short and long answer questions)

Paper 2: (a variety of short and long answer questions)

Paper 3: (a variety of short and long answer questions)



Text Books



Psychology-Related Jobs



Art therapist



Consumer psychologist



Counselor



Forensic or criminal psychologist



School psychologist



Sports psychologist