

The Year the World Stopped

This year, it has felt a bit like the world has sometimes stopped. For a while, life changed a lot.

The following tasks are set for anyone who is self isolating. You don't need to do them all. They are designed so you can do one a week. If you are only off school for one week, just do the first task, but if you are off for longer, or more than once, you can do others



Year7- Art

TASK 1. This week you make a drawing of an endangered animal. You will

- Learn about animals that are endangered
- Practise accurate drawing from a secondary source (a picture)

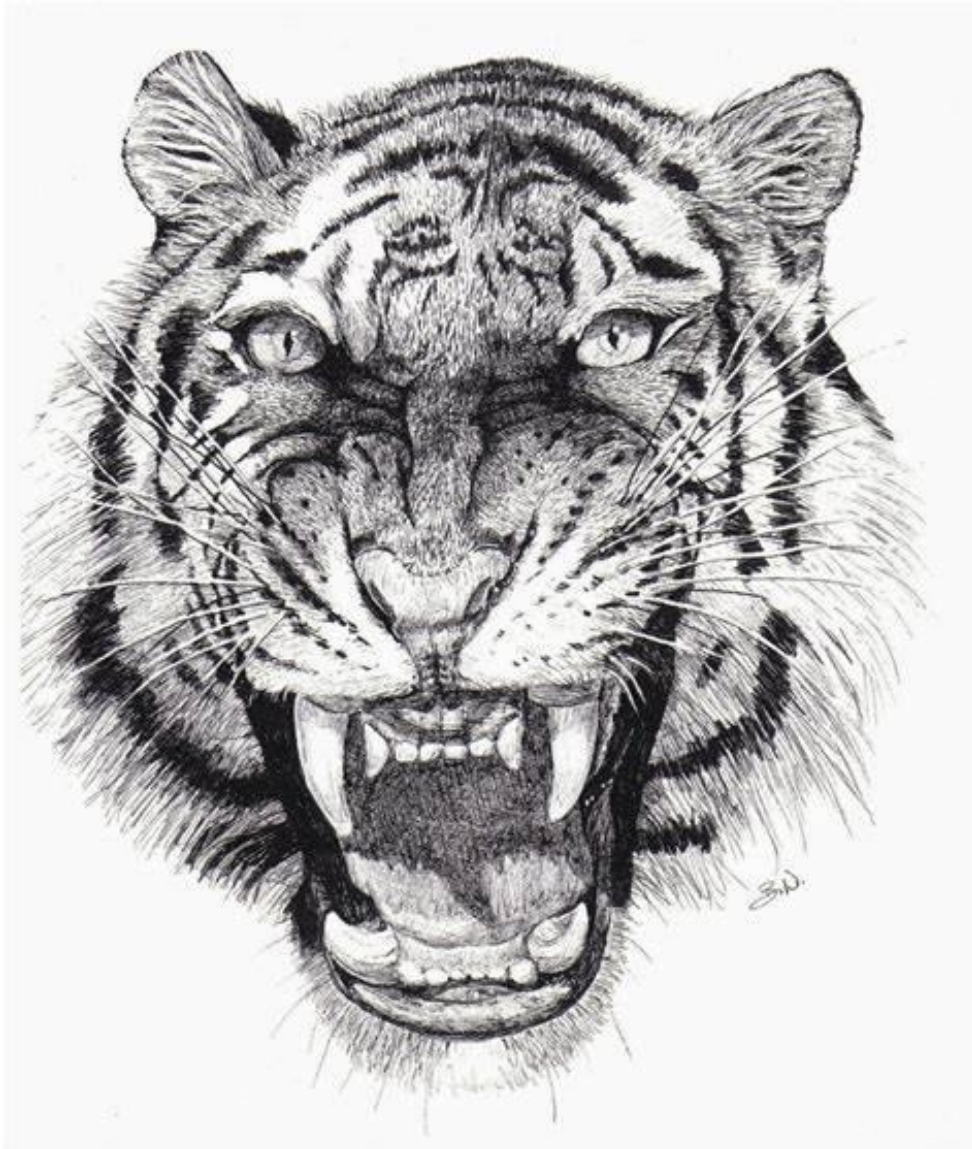
During lockdown, a lot of people have thought more about the natural world and about looking after our planet. We know that many animals have become endangered.

See the following slides for an explanation- read through carefully!

Use the internet, or a book, to look at images of endangered animals. Find a good quality, clear image to draw from



Make an A4, detailed drawing of your chosen animal.



Tips

- Start by sketching the rough shape lightly, filling your paper
- Your first shape won't be right straight away- so don't press on!
- Then keep refining and improving the shape until it looks more accurate
- Once you're happy with the shape, start to add detail
- Does the animal have any patterns?
- What is its texture (feel)? Is it furry, scaly etc. How can you show this with your pencil?
- Try to add shading- look at how the light falls on the animal and where you can see shadows- try to show this. It is sometimes easier to work from a black and white picture to help with this
- Keep going, adding as much detail as you can.
- Remember the key is to keep LOOKING!



Year7- Art

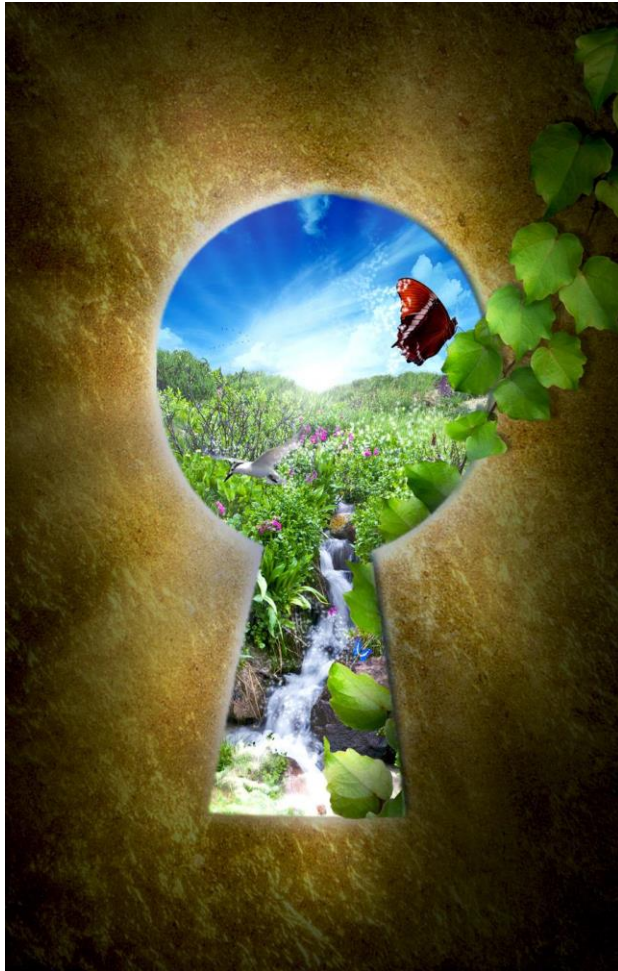
TASK 2. This week you make an imaginative drawing of a view through a keyhole. You will

- Research images, like landscapes and scenes to help you
- Use the research to help you invent a magical, fantasy scene through a keyhole

During lockdown, a lot of people felt stuck indoors. This task asks you to imagine and invent a fantastical scene seen through the keyhole of a locked door! What would your perfect world look like out there?

See the following slides for an explanation- read through carefully!

Look at these examples of imaginative scenes viewed through a keyhole...





1. Sketch a keyhole shape onto A4 paper- try to fill the space to give yourself room!
2. Use books or the internet to find scenes you like. You can find pictures of anything- waterfalls, mountains, sunsets, forests, or even things that could be in the scene, like castles, hot air balloons, fairground rides or animals...
3. Using your research, create your imaginative scene through the keyhole. Remember you wouldn't see ALL of everything- you would just catch a glimpse of parts of the scene through a small hole
4. Add as much detail as you can! You can even add colour if you can. If not, just use a pencil or pen to add lots of detail.



Year7- Art

TASK 3- This task will last you at least 2 hours (2 weeks of self isolation)
You will...

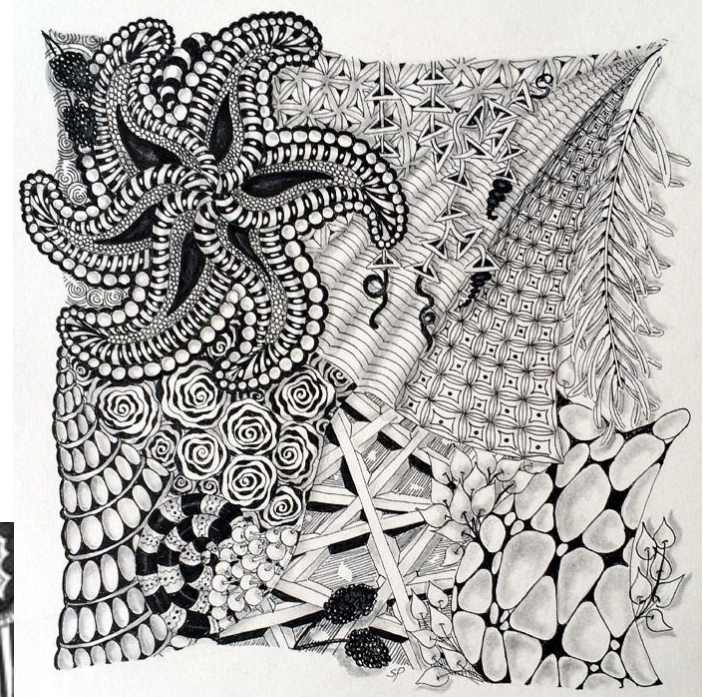
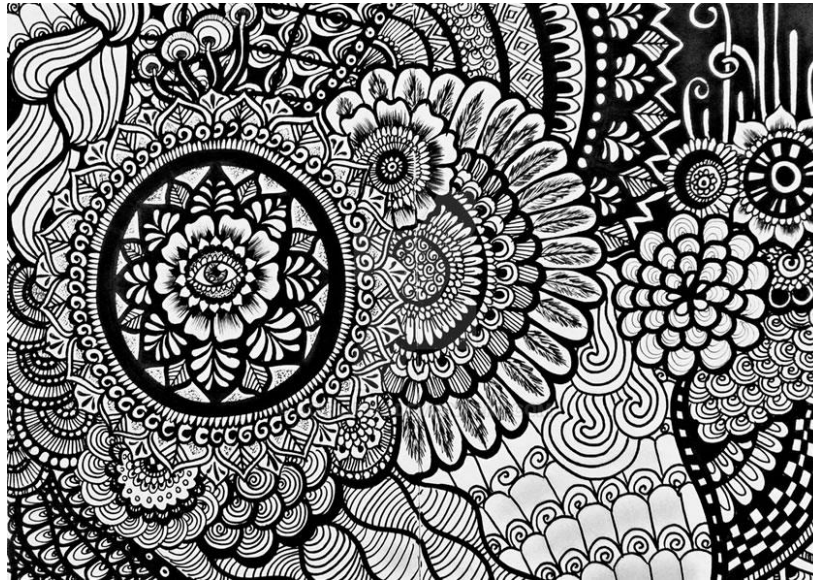
- Develop an Earth Design that includes your own ideas about the theme, “When the World Stopped”
- Use pen techniques to explore **mark making** and **pattern**

Lesson 1- sketch out and plan your design

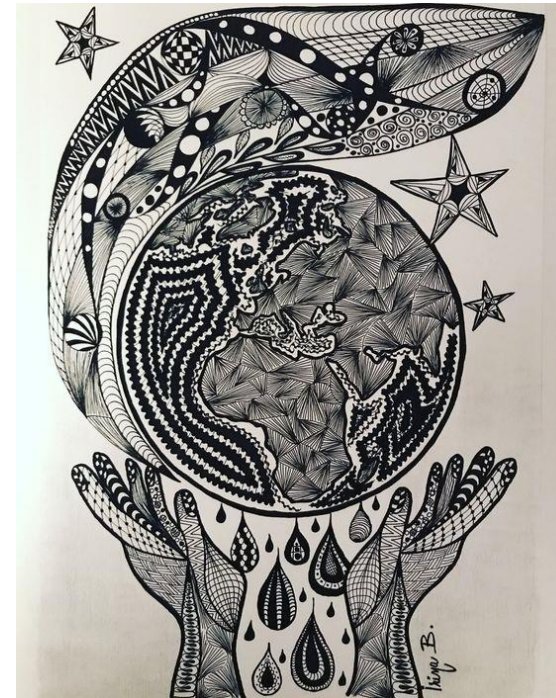
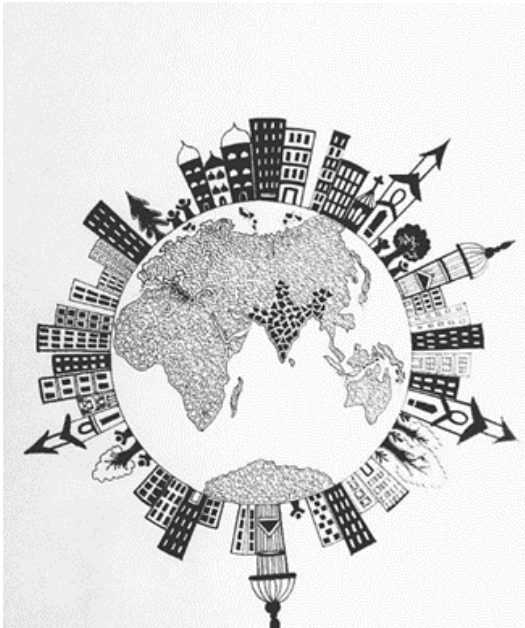
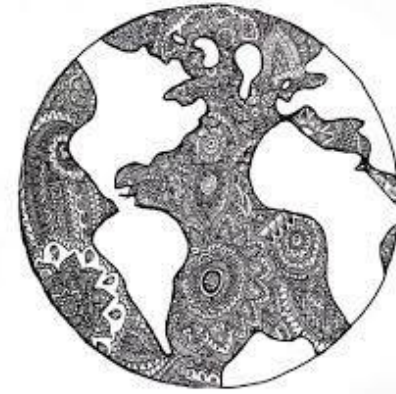
Lesson 2- use a pen to add zentangle patterns

See the following slides for an explanation- read through carefully!

These are called Zentangle designs. They are highly detailed doodles, crammed full of different patterns.

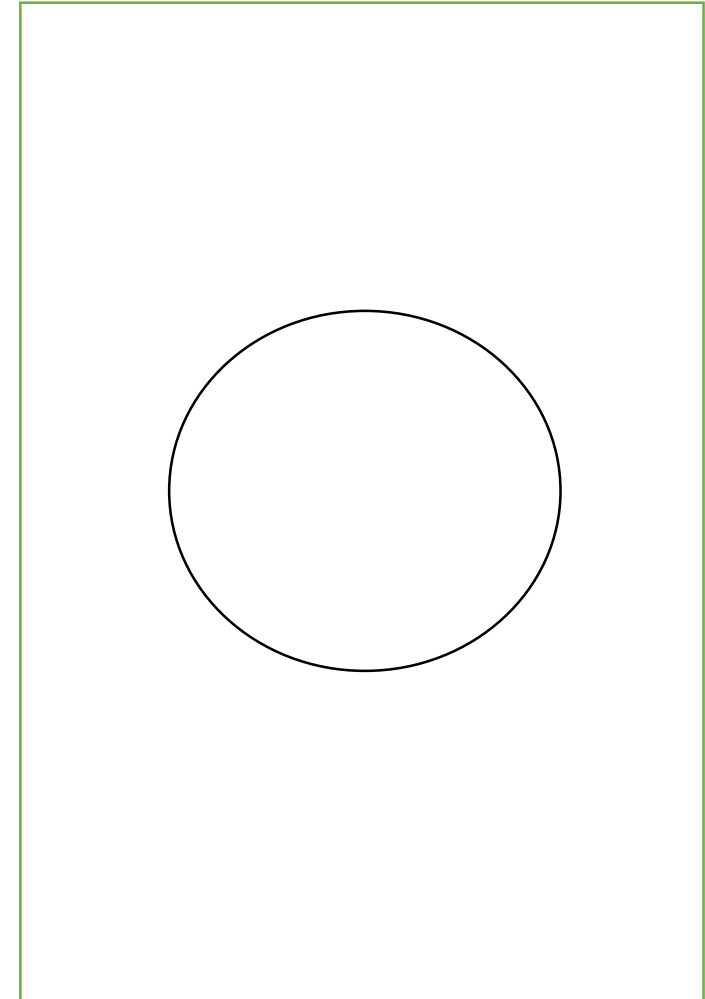


Task: Experiment with mark making and zentangles to create an earth themed design relating to
“The Year the World Stopped”

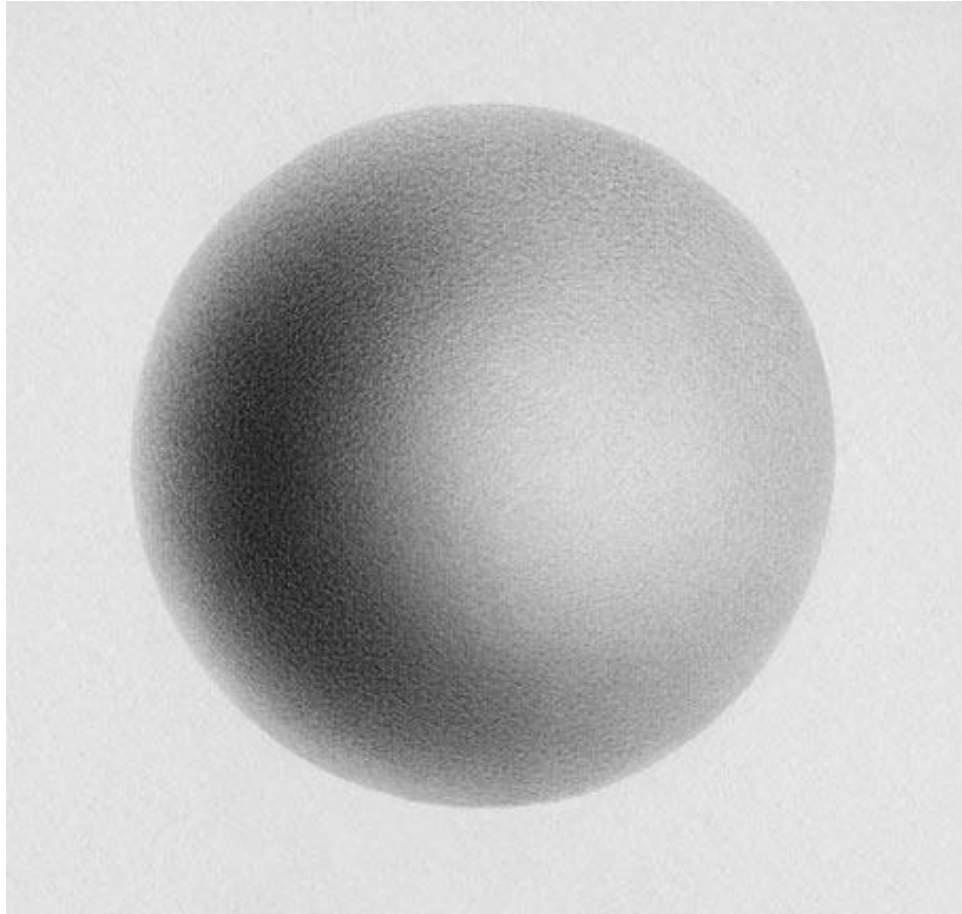


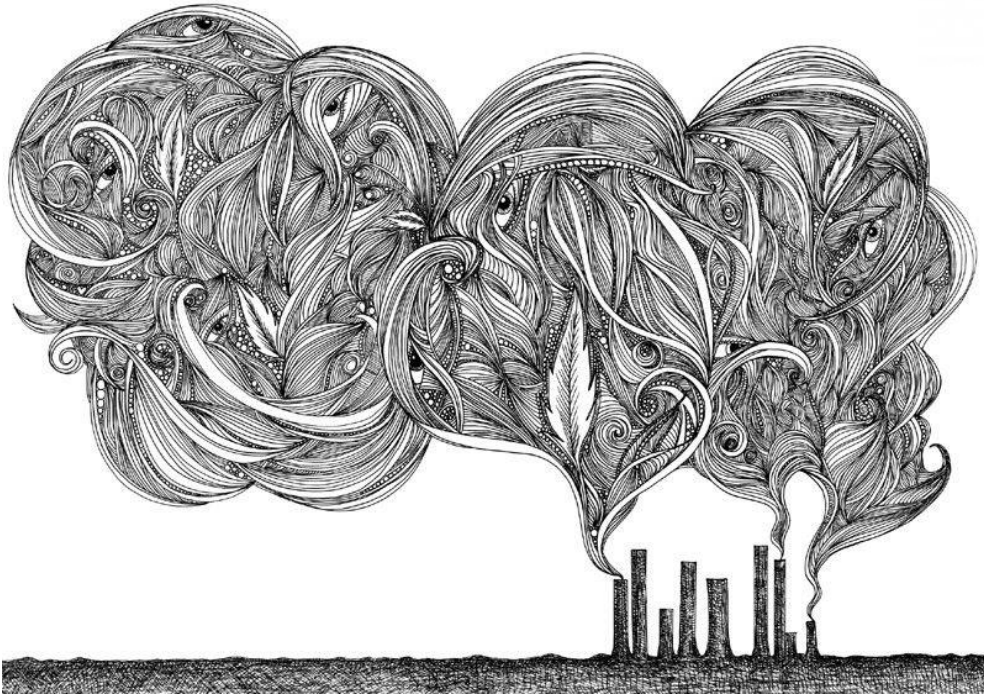
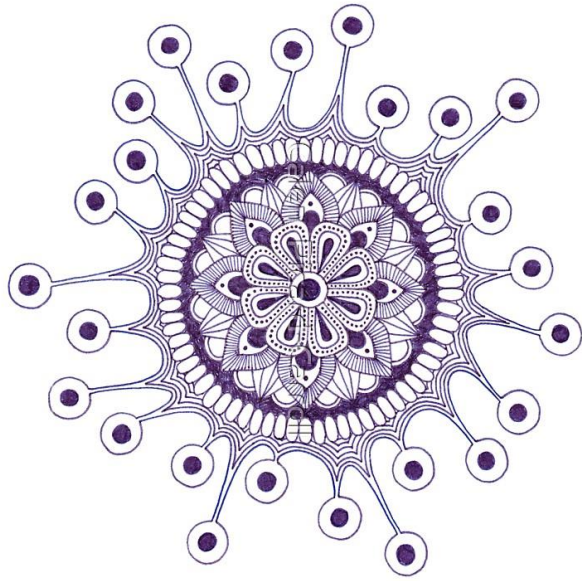
Lesson 1- Get started on the design...

1. Carefully draw your best circle in the centre of an A4 page. You could draw round an object, or use a compass.
2. Shade to make it look 3D in pencil (see next slide)
3. Sketch out the shapes of the continents
4. Add any other designs, shapes or objects around the Earth. You could draw things on the Earth's surface, or use the space around to add shapes, symbols or designs



Look at these to help you add the continents to make it
look like the Earth.
Use a pencil to add shadows that would make it look 3D





What designs would you add to the background, or around the Earth's surface?

How can you include designs that relate to the theme?

Viruses?

Equality?

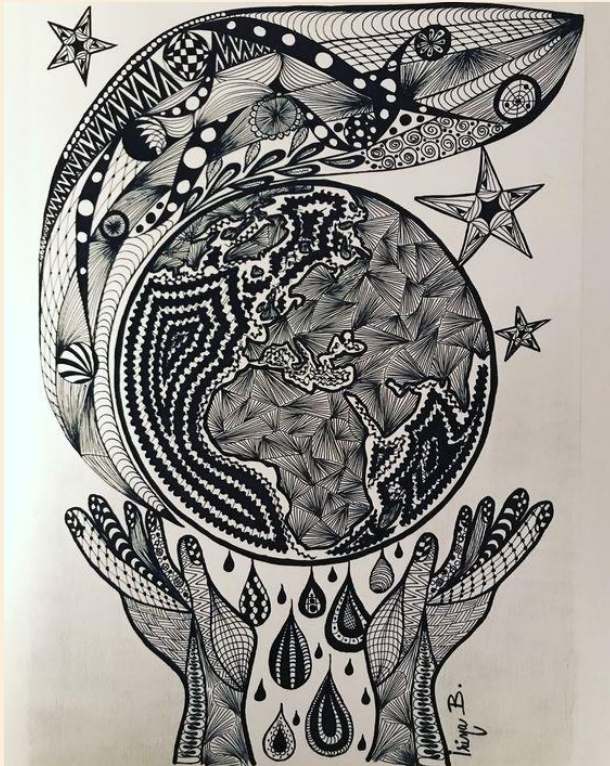
Nature?

Pollution?

Emotions?

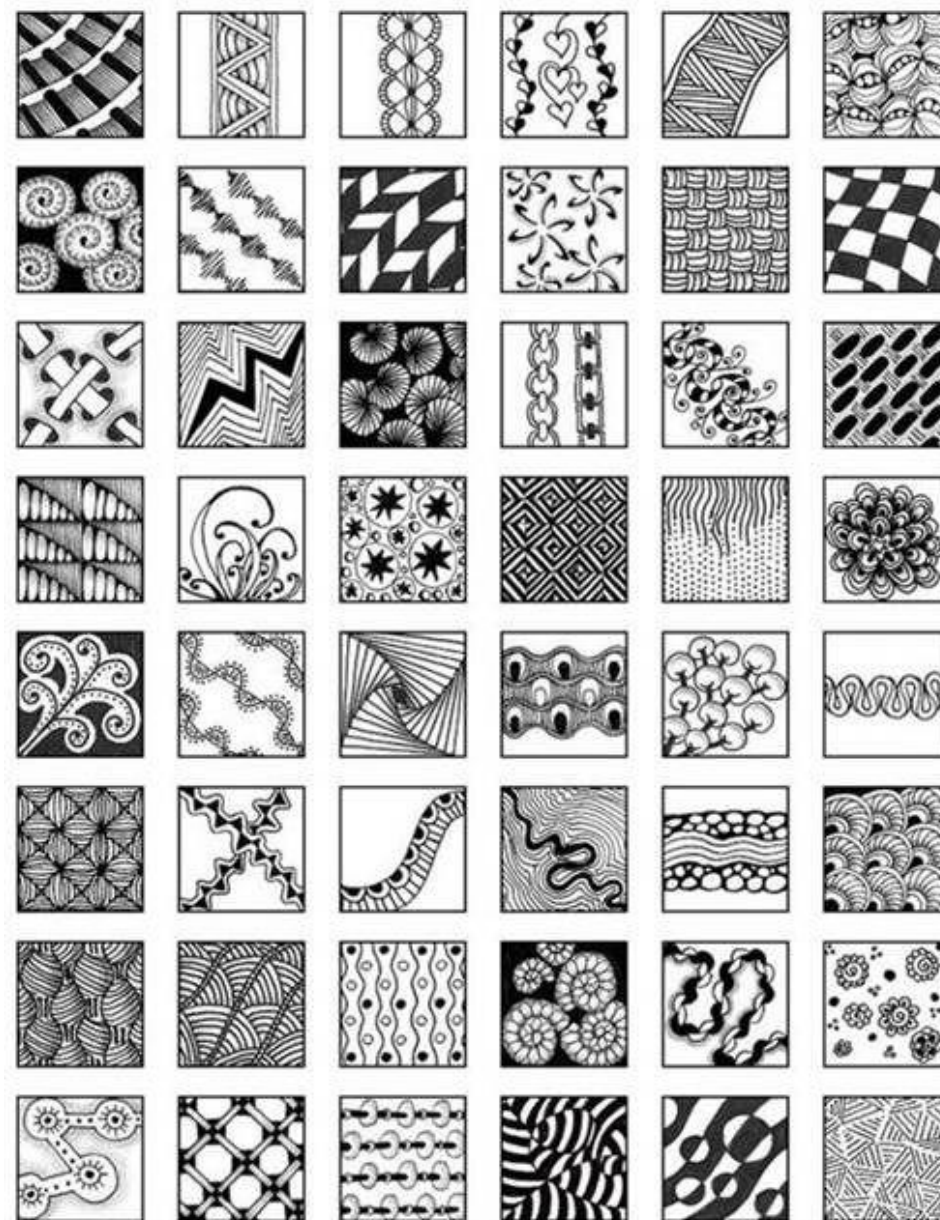
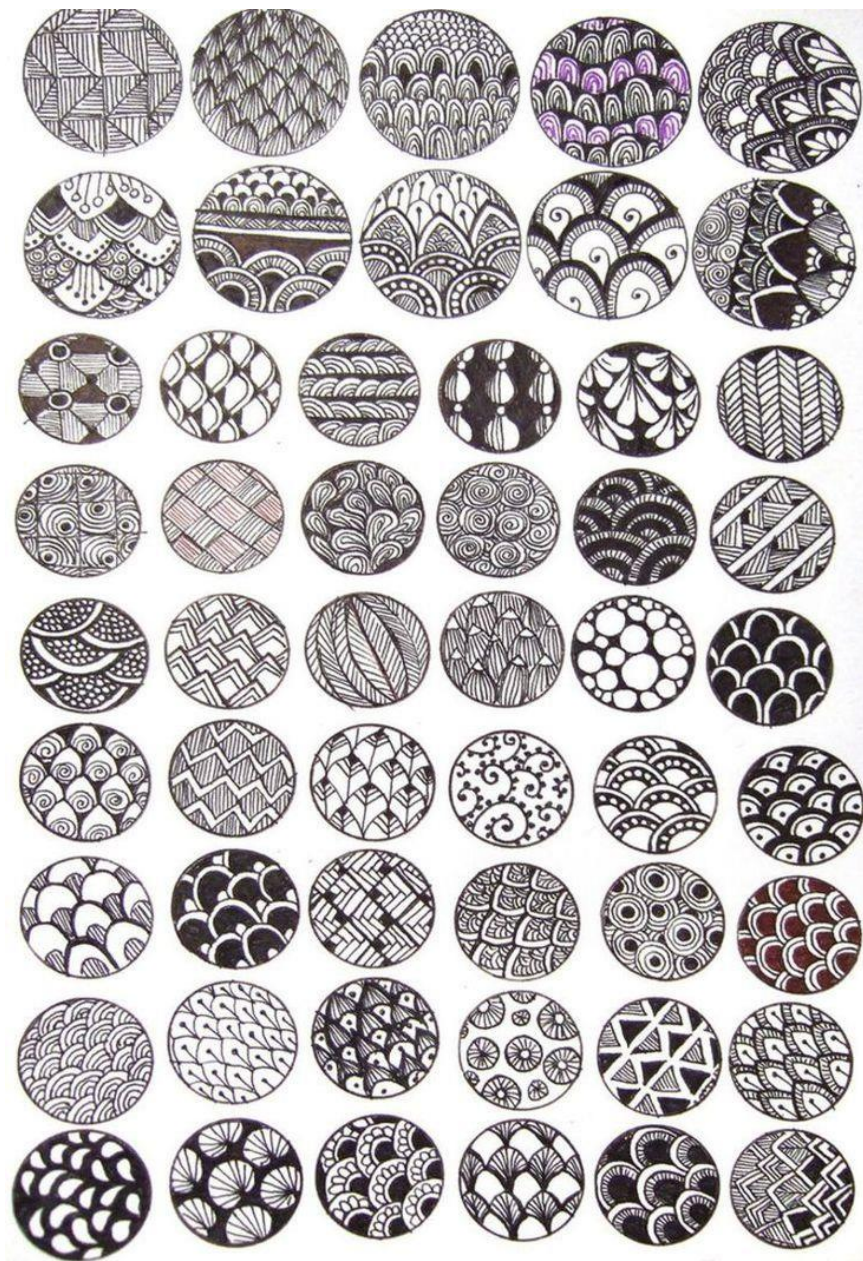
Some of your patterns could have symbolic meaning for you...

Lesson 2- Filling in your Earth design with Zentangles



- You could add Zentangle patterns onto the Earth (eg the seas or the continents)
- You could add Zentangles in the background- the design is up to you?
- Will you leave some areas blank as a contrast?
- Look at the following slide to give you ideas for patterns- but make some up too
- Try to use a pen if you can- the black and white together look more dramatic
- Use the pen to fill in small areas in the Zentangles too

Pattern Ideas



: If you had to choose a pattern to represent any of these ideas, which would ***you*** choose? Why?

Equality

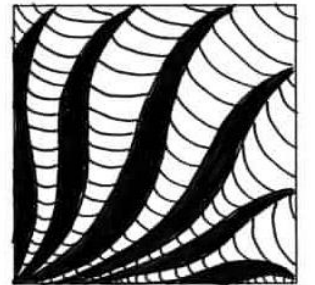
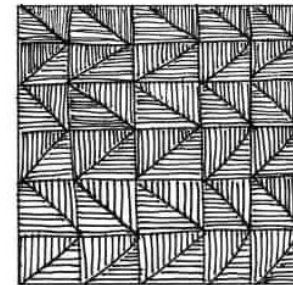
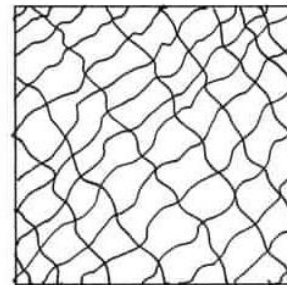
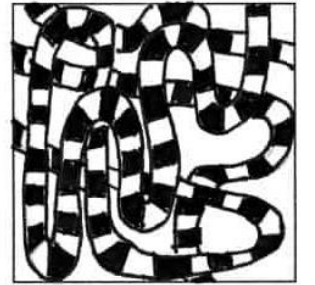
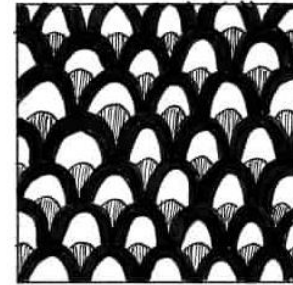
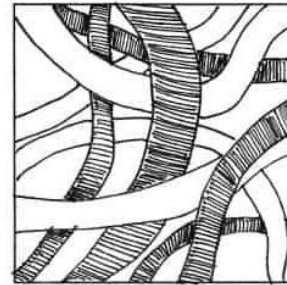
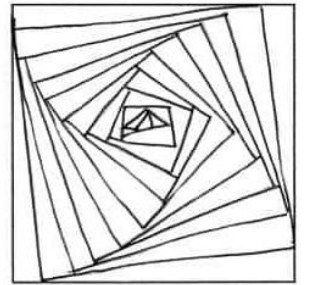
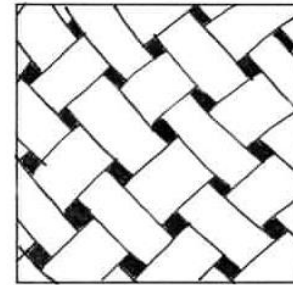
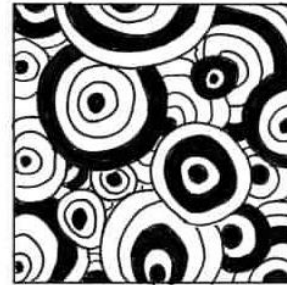
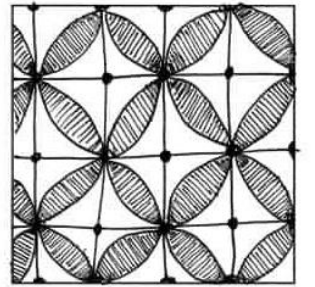
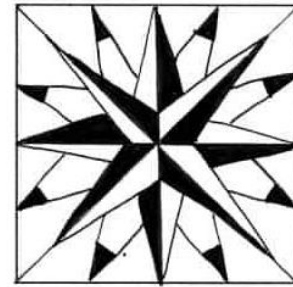
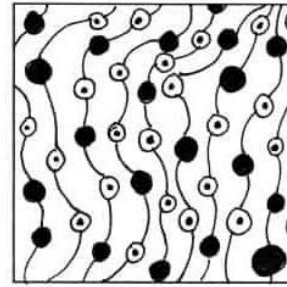
Peace

Boredom

Unity (togetherness)

Fear

Could this help you choose patterns for your design?



Zentangle Earth Design	Form:	Name:						
Grade	1	2	3	4	5	6	7	8
Imaginative Thinking	<p>There could be more variety in the patterns used, and more thinking about the design.</p> <div></div>	<p>A good variety of patterns have been developed. There is some thinking behind the ideas.</p> <div></div>	<p>A wide variety of patterns have been developed. There are strong ideas and symbols used. This is a well thought out piece.</p> <div></div>	<p>A wide variety of imaginative patterns have been thoughtfully developed. The design shows innovative thinking and personal ideas.</p> <div></div>				
Skill and detail	<p>There could be more careful detail. You need to be patient and don't rush- keep practising!</p> <div></div>	<p>The work has been carefully finished in places and skills are improving.</p> <div></div>	<p>The work is well finished, skilful and detailed. The work shows patience and care.</p> <div></div>	<p>The work is very detailed, accurate and skilful. It is ambitious and is very patiently and carefully completed.</p> <div></div>				
Comments	<p>Well done for</p> <p>You could</p> <p>Effort and resilience</p> <div>     </div>							



Year7- Art

TASK 4. This week you will make a drawing of a view through a doorway in your house. You will

- Observe the lines created by doorways and opened doors
- Draw a scene in your home from observation- trying to observe accurately

During lockdown, we have spent a lot of time in our own houses. Doorways can sometimes symbolise new beginnings. Find a spot in your house where you can see through an open door from one room to another, and make a drawing of exactly what you can see. See the following slide for an explanation- read through carefully!



Tips

- Sit in one position, looking through an opened door.
- Sketch the door frame, then try to draw in the diagonal lines of the top and bottom of the open door
- Draw in as much detail as you can- how do all the objects appear from your position?
- If you find it helpful, you could take a photo, then work from that
- Try to show tone- light and shade
- You can add colour if you wish

